

Product datasheet for **AM26708LE-N**

HLA Class II DR Monoclonal Antibody [Clone ID: L243]

Product data:

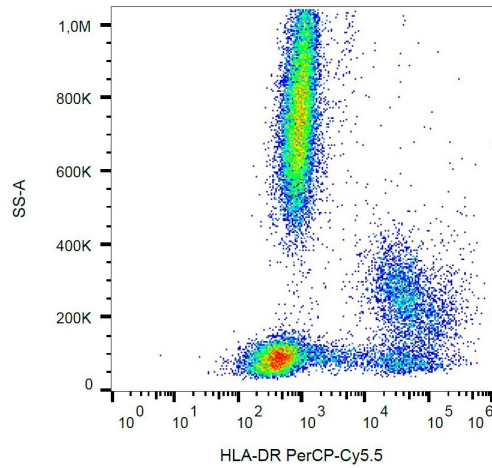
Product Type:	Primary Antibodies
Clone Name:	L243
Applications:	FC, FN, IF, IHC, IP, WB
Recommended Dilution:	Flow cytometry. Immunoprecipitation. Western blot. Immunohistochemistry (paraffin sections). Immunohistochemistry (frozen sections). Immunocytochemistry. Functional Application: blocking.
Reactivity:	Canine, Human, Primate
Isotype:	IgG2a
Clonality:	Monoclonal
Immunogen:	Human B lymphocytes
Specificity:	This antibody recognizes specifically HLA-DR molecules, both peptide-loaded and empty.
Formulation:	Azide free phosphate buffered saline (PBS), approx. pH 7.4; 0.2 µm filter sterilized State: Low Endotoxin State: Liquid Ig fraction
Concentration:	lot specific
Purification:	Protein-A affinity chromatography (> 95% pure by SDS-PAGE)
Conjugation:	Unconjugated
Storage:	Store undiluted at 2-8°C. DO NOT FREEZE!
Stability:	Shelf life: one year from despatch.
Background:	HLA-DR, a member of MHC class II glycoproteins, that bind intracellularly processed peptides and present them to the Th cells, is composed of 36 kDa alpha chain and 27 kDa beta chain, both anchored in the plasma membrane. Together with other MHC II molecules HLA-DR plays a central role in the immune system. It is expressed on antigen-presenting cells (dendritic cells, B lymphocytes, monocytes, macrophages).



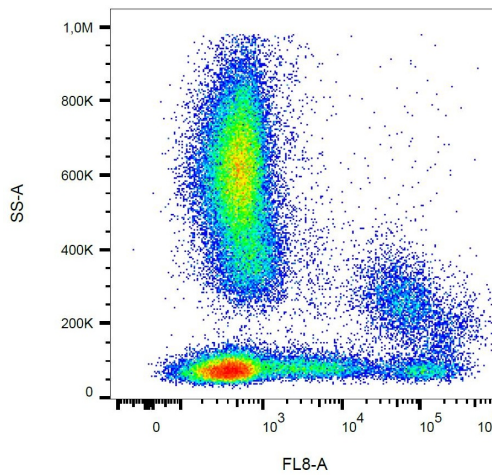
[View online »](#)

Synonyms: HLA-DR, HLA class II histocompatibility antigen DR, MHC class II antigen DR

Product images:



Surface staining of HLA-DR in human peripheral blood with anti-HLA-DR (L243) PerCP-Cy5.5.



Surface staining of HLA-DR in human peripheral blood with anti-HLA-DR (L243) APC-Cy7.