

## Product datasheet for **AM26708FC-N**

### HLA Class II DR Mouse Monoclonal Antibody [Clone ID: L243]

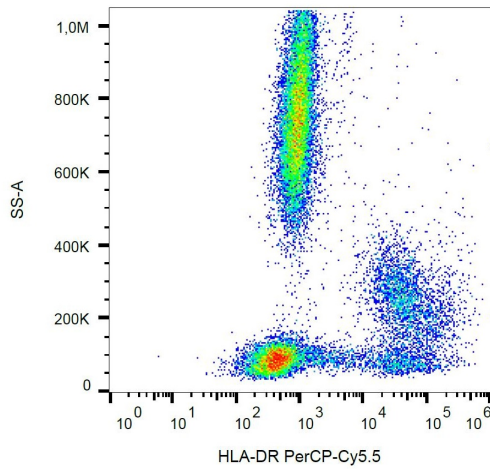
#### Product data:

Product Type:	Primary Antibodies
Clone Name:	L243
Applications:	FC
Recommended Dilution:	<b>Flow cytometry analysis</b> of human blood cells using 4 µl reagent / 100 µl of whole blood or 10 <sup>6</sup> cells in a suspension. The content of a vial (0.4 ml) is sufficient for 100 tests.
Reactivity:	Canine, Human, Primate
Host:	Mouse
Isotype:	IgG2a
Clonality:	Monoclonal
Immunogen:	Human B lymphocytes
Specificity:	This antibody recognizes specifically HLA-DR molecules, both peptide-loaded and empty.
Formulation:	Phosphate buffered saline (PBS) Label: FITC State: Liquid Ig fraction Preservative: 15 mM sodium azide
Conjugation:	FITC
Storage:	Store undiluted at 2-8°C. DO NOT FREEZE! This products is photosensitive and should be protected from light.
Stability:	Shelf life: one year from despatch.
Background:	HLA-DR, a member of MHC class II glycoproteins, that bind intracellularly processed peptides and present them to the Th cells, is composed of 36 kDa alpha chain and 27 kDa beta chain, both anchored in the plasma membrane. Together with other MHC II molecules HLA-DR plays a central role in the immune system. It is expressed on antigen-presenting cells (dendritic cells, B lymphocytes, monocytes, macrophages).
Synonyms:	HLA-DR, HLA class II histocompatibility antigen DR, MHC class II antigen DR

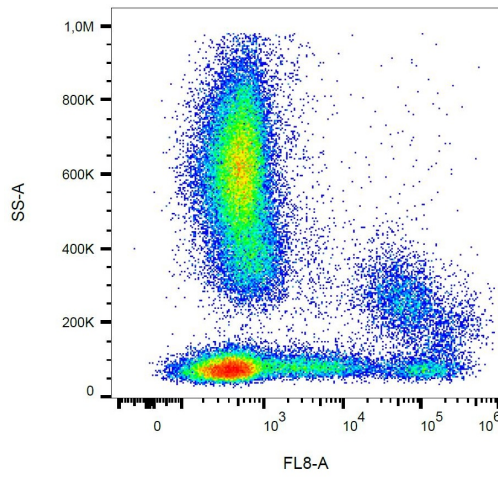


[View online »](#)

**Product images:**



Surface staining of HLA-DR in human peripheral blood with anti-HLA-DR (L243) PerCP-Cy5.5.



Surface staining of HLA-DR in human peripheral blood with anti-HLA-DR (L243) APC-Cy7.