

## Product datasheet for **AM26707PU-N**

### Piccolo (PCLO) Mouse Monoclonal Antibody [Clone ID: PCLO-01]

#### Product data:

Product Type:	Primary Antibodies
Clone Name:	PCLO-01
Applications:	FC, WB
Recommended Dilution:	<b>Western Blot:</b> A small splice variant of PCLO can be analyzed by Western blotting, however, the whole protein is too large (over 400 kDa) to be successfully processed by SDS PAGE. <b>Flow cytometry:</b> Recommended dilution: 1-5 µg/ml, intracellular staining.
Reactivity:	Human
Host:	Mouse
Isotype:	IgG1
Clonality:	Monoclonal
Immunogen:	Human recombinant PCLO protein
Specificity:	This antibody recognizes PCLO (Piccolo), a more than 400 kDa multidomain protein expressed mainly in the presynaptic cytomatrix of the neurons.
Formulation:	Phosphate buffered saline (PBS), approx. pH 7.4 State: Aff - Purified State: Liquid ig fraction Preservative: 15 mM sodium azide
Concentration:	lot specific
Purification:	Protein-A affinity chromatography
Conjugation:	Unconjugated
Storage:	Store undiluted at 2-8°C. <b>DO NOT FREEZE!</b>
Stability:	Shelf life: one year from despatch.
Gene Name:	piccolo presynaptic cytomatrix protein
Database Link:	<a href="#">Entrez Gene 27445 Human</a> <a href="#">Q9Y6V0</a>



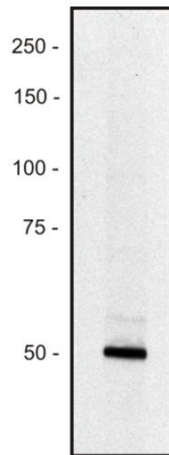
[View online »](#)

**Background:**

PCLO (piccolo, also known as aczonin) is a large (more than 400 kDa) multidomain protein of the presynaptic cytomatrix in neurons, that is present in all vertebrate synapses, but is absent from invertebrates. It contains zinc finger and coiled-coil sequences, as well as N-terminal glutamine-rich sequence, and C-terminal PDZ domain followed by two C2 domains (C2A and C2B). In vitro binding and transfection experiments suggested that PCLO binds to multiple proteins including profilin and L-type calcium channels. It is involved in neurotransmitter release and insulin secretion.

**Synonyms:**

Protein piccolo, Aczonin, ACZ, KIAA0559

**Product images:**

Western blot of human REH erythroid cell line lysate (1% laurylmaltoside); non-reduced sample, immunostained by mAbPCLO-01 and goat anti-mouse IgG (H+L)-HRP conjugate. The zone evidently corresponds to a small splice variant of the PCLO protein present in this type of cell (see Uniprot database, Genome Res. 14:2121-2127 (2004)); the major form (over 500 kDa) expressed in neurons is too large for analysis by Western blotting.