

## Product datasheet for **AM26402PU-L**

### alpha Synuclein (SNCA) (1-140) Mouse Monoclonal Antibody [Clone ID: 4B4]

#### Product data:

Product Type:	Primary Antibodies
Clone Name:	4B4
Applications:	WB
Recommended Dilution:	Western blot.
Reactivity:	Human
Host:	Mouse
Isotype:	IgG2a
Clonality:	Monoclonal
Immunogen:	Recombinant human $\alpha$ -synuclein (1-140 aa) expressed in E. coli
Specificity:	This antibody recognizes the recombinant $\alpha$ -synuclein.
Formulation:	0.01M PBS pH7.2 State: Aff - Purified State: Lyophilized Ig fraction
Reconstitution Method:	Double distilled water is recommended to adjust the final concentration to 1.00 mg/ml.
Purification:	Protein G affinity purified
Conjugation:	Unconjugated
Storage:	Store at -20 °C. Avoid repeated freezing and thawing.
Stability:	Shelf life: one year from despatch.
Gene Name:	synuclein alpha
Database Link:	<a href="#">Entrez Gene 6622 Human P37840</a>
Background:	Alpha-Synuclein belongs to a family of small cytoplasmic proteins expressed predominantly in neurons. Alpha-synuclein may be involved in neuronal plasticity and could act as a molecular chaperone that mediates the transformation of soluble A $\beta$ into insoluble amyloid. The protein is a major component of Lewy bodies, the pathological hallmark of Parkinson's disease, and is also observed in senile plaques of Alzheimer's disease patients. Human $\alpha$ -synuclein appears to be phosphorylated at two major sites, serine 129 and serine 87, and phosphorylation may play a role in the functional regulation of the protein.

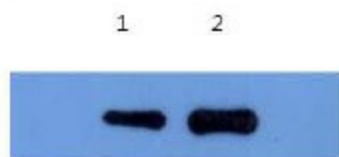


[View online »](#)

Synonyms: NACP, PARK1

### Product images:

Western blot- $\alpha$ -synuclein( $\alpha$ - SYN)



1&2 :  $\alpha$ -synuclein( $\alpha$ - SYN) 1ug/well

Detects alpha-synuclein using antibody 4B4 at 1:1000 (10ug/ml) dilution.