

## Product datasheet for **AM26392PU-L**

### CD11a (ITGAL) Mouse Monoclonal Antibody [Clone ID: A11]

#### Product data:

Product Type:	Primary Antibodies
Clone Name:	A11
Applications:	ELISA, FC, IHC
Recommended Dilution:	<b>EIA.</b> <b>Immunohistochemistry:</b> <b>Fluorescence flow cytometry:</b>
Reactivity:	Human
Host:	Mouse
Isotype:	IgG1
Clonality:	Monoclonal
Immunogen:	Human cytolytic T lymphocytes
Specificity:	This antibody is reactive to CD11a.
Formulation:	0.01M PBS, pH 7.0 State: Aff - Purified State: Lyophilized Ig fraction
Reconstitution Method:	Double distilled water is recommended and to adjust the final concentration to 1.00 mg/ml.
Purification:	Affinity Chromatography on Protein G
Conjugation:	Unconjugated
Storage:	Store lyophilized at 2-8°C for 6 months or at -20°C long term. After reconstitution store the antibody undiluted at 2-8°C for one month or (in aliquots) at -20°C long term. Avoid repeated freezing and thawing.
Stability:	Shelf life: one year from despatch.
Gene Name:	integrin subunit alpha L
Database Link:	<a href="#">Entrez Gene 3683 Human P20701</a>



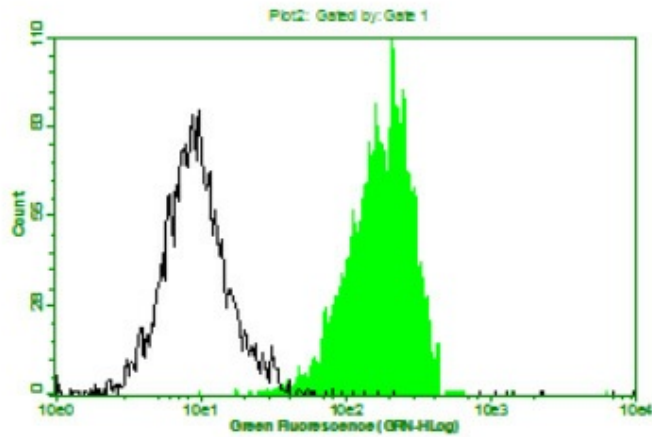
[View online »](#)

**Background:**

CD11 $\alpha$  comprises the alpha-chain of lymphocyte function associated factor I (LFA-1). LFA-1 is an adhesion molecule expressed on the surface of T cell, B cell, macrophage, monocytes and neutrophils. LFA-1 plays a role in lymphocyte recruitment to site of infection. LFA-1 initiates a weak link between lymphocytes and antigen presentation cells (APC) by binding to intercellular adhesion molecule 1 (ICAM-1) on APC.

**Synonyms:**

Integrin alpha-L, LFA1, LFA-1

**Product images:**

histogram of Jurkat cells stained with 10mg/ml mouse anti-human CD11a monoclonal antibody. Black line histogram represents Jurkat cells stained with isotype control, mouse anti-TB 38Kd antigen monoclonal antibody (Clone B12F8).