

Product datasheet for **AM26391PU-L**

6xHistidine Epitope Tag (HHHHHH) Mouse Monoclonal Antibody [Clone ID: 10A12]

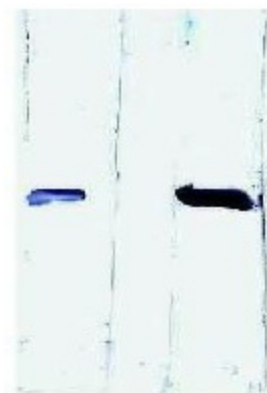
Product data:

Product Type:	Primary Antibodies
Clone Name:	10A12
Applications:	WB
Recommended Dilution:	Western blot.
Host:	Mouse
Isotype:	IgG1
Clonality:	Monoclonal
Immunogen:	Synthetic 6 x Histidine peptide conjugated with KLH
Specificity:	This antibody binds to His-tagged recombinant protein, but not with KLH.
Formulation:	0.01M PBS pH 7.2 State: Purified State: Lyophilized purified IgG fraction
Conjugation:	Unconjugated
Storage:	Prior to reconstitution store at 2-8°C. Following reconstitution store undiluted at 2-8°C for one month or (in aliquots) at -20°C for longer. Avoid repeated freezing and thawing.
Stability:	Shelf life: one year from despatch.
Background:	Plasmid vectors for the expression of coding regions of eukaryotic genes in bacterial, insect and mammalian hosts are in common usage; such expression vectors are frequently used to encode hybrid fusion proteins consisting of a eukaryotic target protein and a specialized region designed to aid in the purification and visualization of the target protein. A system that has proven to be very successful relies on the insertion of a six histidine (6xHis) sequence in the N-terminus of the encoded protein, allowing for efficient coupling to Ni -chelating resins and purification by single step affinity chromatography. Visualization of such fusion proteins can be achieved by utilizing antibodies generated against specific peptide sequences downstream from the multiple cloning site. The antibody is useful for detection, isolation and localization of the His-tag proteins.



[View online »](#)

Product images:

Clone
HisH8Clone
10A12< His-tagged HIV-p24
recombinant proteinWestern blotting using anti-His antibodies (HisH8
and 10A12) to detect His-tagged HIV p24