

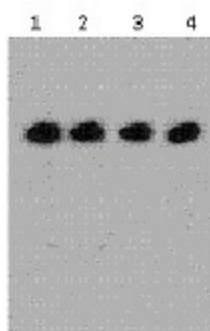
Product datasheet for **AM26389PU-N**

DYKDDDDK Epitope Tag Mouse Monoclonal Antibody [Clone ID: Flag.C2]

Product data:

| | |
|-------------------------------|--|
| Product Type: | Primary Antibodies |
| Clone Name: | Flag.C2 |
| Applications: | IP, WB |
| Recommended Dilution: | Western blot: 1/1000. Immunoprecipitation: 1/200. Immunostaining: 1/200. |
| Host: | Mouse |
| Isotype: | IgG1 |
| Clonality: | Monoclonal |
| Immunogen: | A synthetic peptide (DYKDDDDK) coupled to KLH |
| Specificity: | This antibody binds to DYKDDDDK-tagged recombinant protein. |
| Formulation: | 0.01M PBS, pH 7.2 State: Purified State: Lyophilized purified IgG fraction Preservative: 0.05% Sodium azide |
| Reconstitution Method: | Restore with deionized or distilled Water |
| Conjugation: | Unconjugated |
| Storage: | Store (in aliquots) at -20°C. Avoid repeated freezing and thawing. |
| Stability: | Shelf life: one year from despatch. |
| Background: | Useful tool for the localisation and characterisation of DDDDK tagged proteins. |
| Synonyms: | FLAG Epitope Tag, ECS Epitope Tag, FLAG-tag, ECS-tag, D-tag |



Product images:

Western blot analysis of 293 cells transfected with DYKDDDDK-tagged vectors at different concentration (0.5mg/ml), Lane 4: Lowest concentration (0.1 g/ml)