

Product datasheet for **AM26389PU-L**

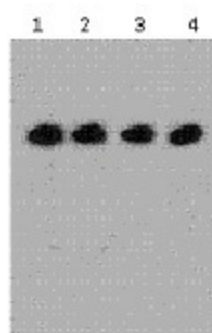
DYKDDDDK Epitope Tag Mouse Monoclonal Antibody [Clone ID: Flag.C2]

Product data:

Product Type:	Primary Antibodies
Clone Name:	Flag.C2
Applications:	IP, WB
Recommended Dilution:	Western blot: 1/1000. Immunoprecipitation: 1/200. Immunostaining: 1/200.
Host:	Mouse
Isotype:	IgG1
Clonality:	Monoclonal
Immunogen:	A synthetic peptide (DYKDDDDK) coupled to KLH
Specificity:	This antibody binds to DYKDDDDK-tagged recombinant protein.
Formulation:	0.01M PBS, pH 7.2 State: Purified State: Lyophilized purified IgG fraction Preservative: 0.05% Sodium azide
Reconstitution Method:	Restore with deionized or distilled Water
Conjugation:	Unconjugated
Storage:	Store (in aliquots) at -20°C. Avoid repeated freezing and thawing.
Stability:	Shelf life: one year from despatch.
Background:	Useful tool for the localisation and characterisation of DDDDK tagged proteins.
Synonyms:	FLAG Epitope Tag, ECS Epitope Tag, FLAG-tag, ECS-tag, D-tag



Product images:



Western blot analysis of 293 cells transfected with DYKDDDDK-tagged vectors at different concentration (0.5mg/ml), Lane 4: Lowest concentration (0.1 g/ml)