

## Product datasheet for **AM26386PU-L**

### IL6 Mouse Monoclonal Antibody [Clone ID: 1B6]

#### Product data:

Product Type:	Primary Antibodies
Clone Name:	1B6
Applications:	ELISA, FC, WB
Recommended Dilution:	ELISA. Western blot. Flow Cytometry.
Reactivity:	Human
Host:	Mouse
Isotype:	IgG1
Clonality:	Monoclonal
Immunogen:	Purified recombinant human IL-6
Specificity:	The antibody is reactive with recombinant human IL-6. Reactivity with natural antigen has not been evaluated.
Formulation:	0.01M PBS, pH 7.0 State: Purified State: Lyophilized Ig fraction
Reconstitution Method:	Double distilled water is recommended to reconstitute the antibody.
Purification:	Protein G affinity purified
Conjugation:	Unconjugated
Storage:	Store lyophilized at 2-8°C for 6 months or at -20°C long term. After reconstitution store the antibody undiluted at 2-8°C for one month or (in aliquots) at -20°C long term. Avoid repeated freezing and thawing.
Stability:	Shelf life: one year from despatch.
Gene Name:	interleukin 6
Database Link:	<a href="#">Entrez Gene 3569 Human P05231</a>



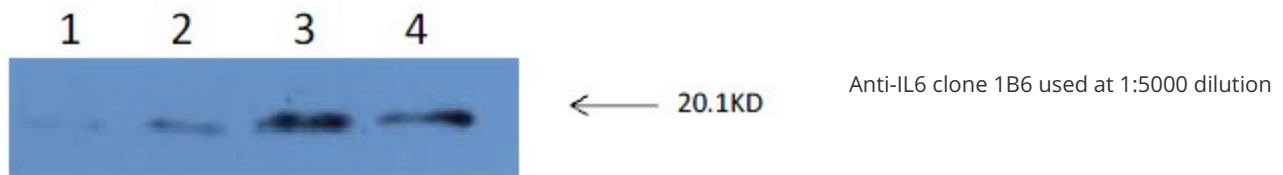
[View online »](#)

**Background:**

Interleukin 6 (IL6) is a multifunctional 24 kDa protein originally discovered in the medium of RNA stimulated fibroblastoid cells. It is upregulated by IL1, TNF, PDGF, IFN beta, TNF alpha, NGF, IL17 and downregulated by glucocorticoids IL4, TGF beta. IL6 appears to be directly involved in the responses that occur after infection and cellular injury, and it may prove to be as important as IL1 and TNF alpha in regulating the acute phase response. IL6 has also been implicated in regulating adipose mass. IL6 is reported to be produced by fibroblasts, activated T cells, activated monocytes or macrophages and endothelial cells. It acts upon a variety of cells including fibroblasts, myeloid progenitor cells, T cells, B cells and hepatocytes. In addition, IL6 appears to interact with IL2 in the proliferation of T lymphocytes. IL6 potentiates the proliferative effect of IL3 on multipotential hematopoietic progenitors.

**Synonyms:**

IL-6, Interferon beta-2, IFNB2, B-cell stimulatory factor 2, BSF-2, CDF

**Product images:****Western blot-using IL6 antibody (1B6)**

Lanes: 1&2-IL6 at 25ng/well, 3&4 -IL6 at 50ng/well