

## Product datasheet for **AM26331PU-N**

### Ly6g Rat Monoclonal Antibody [Clone ID: NIMP-R14]

#### Product data:

Product Type:	Primary Antibodies
Clone Name:	NIMP-R14
Applications:	ELISA, FC, FN, IHC
Recommended Dilution:	<p><b>Immunohistochemistry on Frozen Sections:</b> Tissue was fixed with acetone (Ref.6,10). The typical starting working dilution is 1/50.</p> <p><b>Immunohistochemistry on Paraffin sections</b>(Ref.4,5,9): Blocking with 20% normal rabbit serum (Ref.4): The typical starting working dilution is 1/50.</p> <p><b>Flow Cytometry</b> (Ref.1,3,7): 5 x 10<sup>5</sup> cells were incubated with 10 µg/ml antibody (Ref.3). The typical starting working dilution is 1/50.</p> <p><b>Functional Assay</b> (Ref.2,3,5,6,8): Neutrophil depletion. Mice were treated with NIMP-R14 given intraperitoneally at a dose of 1mg, 6h before infection (Ref.5).</p> <p><b>Immunoassay</b> (Ref.1).</p> <p><b>Positive Control:</b> Mouse neutrophils.</p>
Reactivity:	Mouse
Host:	Rat
Isotype:	IgG2b
Clonality:	Monoclonal
Immunogen:	Purified BALB/c mouse neutrophils
Specificity:	<p>The monoclonal antibody <i>NIMP-R14</i> is highly specific for murine Ly-6G and Ly-6C. The antibody has been successfully used to stain polymorphonuclear (PMN) cells and monocytes for fluorescent activated cell sorting and in frozen and paraffin sections. Treatment with antibodies in vivo leads to neutropenia and has inhibitory effect on local immune responses. Furthermore, it has been shown to be useful for depletion of neutrophils in mice. It depletes neutrophils as soon as 6 hours after injection and up to 6 days.</p>
Formulation:	<p>PBS</p> <p>State: Purified</p> <p>State: Liquid, 0.2 µm filtered Ig fraction</p> <p>Stabilizer: 0.1% BSA</p>
Concentration:	lot specific
Purification:	Protein G Chromatography



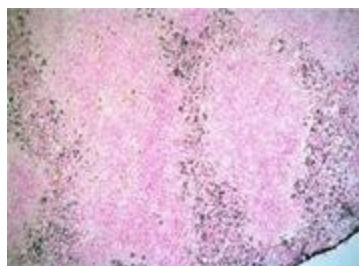
[View online »](#)

<b>Conjugation:</b>	Unconjugated
<b>Storage:</b>	Store undiluted at 2-8°C.
<b>Stability:</b>	Shelf life: one year from despatch.
<b>Gene Name:</b>	lymphocyte antigen 6 complex, locus G
<b>Database Link:</b>	<a href="#">Entrez Gene 546644 Mouse P35461</a>

**Background:** The Ly-6G/-6C locus encodes a family of Ly-6 proteins including Ly-6G and Ly-6C. Ly-6 antigens have a molecular weight between 15,000 and 18,000. Ly6G is together with Ly6c a component of the myeloid differentiation antigen Gr-1. Ly6G a GPI-anchored protein and is a good marker of peripheral neutrophils. Although predominantly presents on neutrophils, it is also expressed on a subset of eosinophils, differentiating pre-monocytes and plasmacytoid dendritic cells. Ly6C is a monocyte/macrophage and endothelial cell differentiation antigen regulated by interferon gamma, and may play a role in the development and maturation of lymphocytes. It is expressed on bone marrow cells, monocytes/macrophages, neutrophils, endothelial cells, and T cell subsets. Expression of Gr-1 in bone marrow correlates with granulocyte differentiation and maturation. However, the physiological role of Ly6G alone remains still unclear.

**Synonyms:** Gr-1 Granulocyte marker

### Product images:



Staining for Ly-6G/-6C of frozen section of mouse spleen