

Product datasheet for **AM26143AC-N**

CD61 (ITGB3) Mouse Monoclonal Antibody [Clone ID: VIPL2]

Product data:

Product Type:	Primary Antibodies
Clone Name:	VIPL2
Applications:	FC
Recommended Dilution:	Flow Cytometry analysis of human blood cells using 10 µl reagent / 100 µl of whole blood or 10 ⁶ cells in a suspension. The content of a vial (1 ml) is sufficient for 100 tests.
Reactivity:	Human, Primate
Host:	Mouse
Isotype:	IgG1
Clonality:	Monoclonal
Specificity:	This antibody recognizes CD61, a 90-110 kDa transmembrane glycoprotein of integrin family, expressed on platelets, megacaryocytes, osteoclasts, endothelial cells and other cell types, including leucocytes and smooth muscle cells.
Formulation:	Phosphate buffered saline (PBS) Label: APC State: Liquid purified Ig fraction Stabilizer: 0.2% (w/v) high-grade protease free Bovine Serum Albumin (BSA) Preservative: 15 mM sodium azide Label: Conjugated with cross-linked Allophycocyanin (APC) under optimum conditions. The conjugate is purified by size-exclusion chromatography and adjusted for direct use.
Conjugation:	APC
Storage:	PStore the antibody undiluted at 2-8°C. DO NOT FREEZE! This product is photosensitive and should be protected from light.
Stability:	Shelf life: one year from despatch.
Gene Name:	integrin subunit beta 3
Database Link:	Entrez Gene 3690 Human P05106



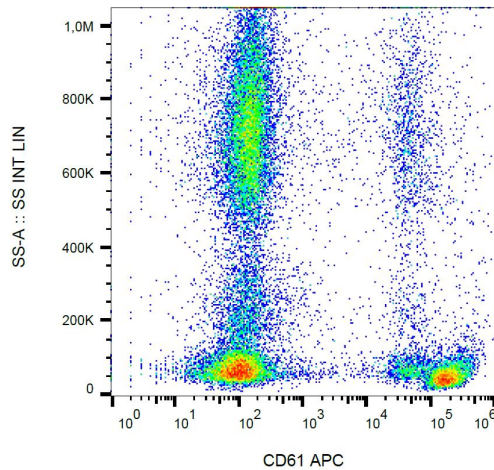
[View online »](#)

Background:

CD61 (beta3 integrin) is a transmembrane glycoprotein, which associates with CD41 or CD51 molecules to form heterodimeric adhesion receptors. CD41/CD61 complex is one of the earliest markers of the megakaryocytic lineage. It binds to fibronectin, fibrinogen and von Willebrand factor, and is involved in platelet aggregation. CD51/CD61 complex has similar binding properties and is involved in modulating migration and survival of angiogenic endothelial cells.

Synonyms:

Integrin beta-3, GP3A, GPIIIa

Product images:

Surface staining of human peripheral blood with anti-human CD61 (VIPL2) APC.