

## Product datasheet for **AM26140RP-N**

### Human Lambda Light Chain Mouse Monoclonal Antibody [Clone ID: 1-155-2]

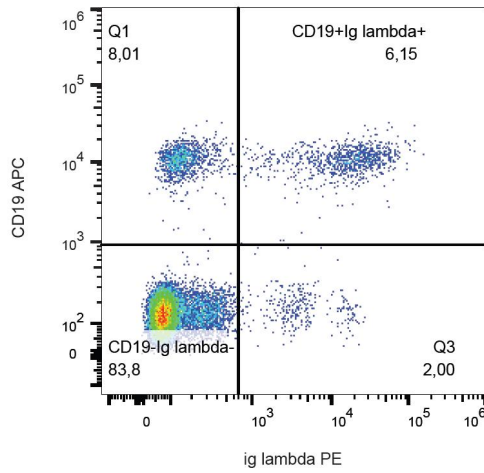
#### Product data:

Product Type:	Primary Antibodies
Clone Name:	1-155-2
Applications:	FC
Recommended Dilution:	<b>Flow Cytometry analysis</b> of human blood cells using 10 µl reagent / 100 µl of whole blood or 10e6 cells in a suspension.
Reactivity:	Human
Host:	Mouse
Isotype:	IgG1
Clonality:	Monoclonal
Immunogen:	Human IgA1 lambda myeloma protein
Specificity:	This antibody recognizes lambda light chains (22.5 kDa) of human immunoglobulin.
Formulation:	Phosphate buffered saline (PBS) containing 15 mM sodium azide Label: PE State: Liquid purified Ig fraction Label: Conjugated with R-Phycoerythrin under optimum conditions. The conjugate is purified by size-exclusion chromatography and adjusted for direct use.
Conjugation:	PE
Storage:	Store the antibody at 2 - 8 °C. DO NOT FREEZE! This product is photosensitive and should be protected from light.
Stability:	Shelf life: one year from despatch.
Background:	Immunoglobulin classes share the same basic four polypeptide chain structure of two heavy chains (five heavy chains types) and two light chains (kappa, lambda; both having a molecular weight of 22.5kDa). Kappa and lambda consist of a variable region and a constant region and can easily be differentiated by the antigenic properties of the constant region. The ratio of kappa to lambda is 70:30.



[View online »](#)

Product images:



Surface staining of lambda light chains in human peripheral blood with anti-lambda light chains (1-155-2) PE.