

Product datasheet for **AM26140PU-N**

Human Lambda Light Chain Mouse Monoclonal Antibody [Clone ID: 1-155-2]

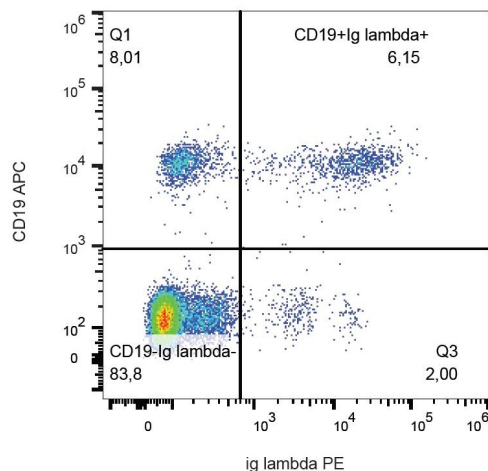
Product data:

Product Type:	Primary Antibodies
Clone Name:	1-155-2
Applications:	FC
Recommended Dilution:	Flow cytometry.
Reactivity:	Human
Host:	Mouse
Isotype:	IgG1
Clonality:	Monoclonal
Immunogen:	Human IgA1 lambda myeloma protein
Specificity:	This antibody recognizes lambda light chains (22.5 kDa) of human immunoglobulin.
Formulation:	Phosphate buffered saline (PBS) with 15 mM sodium azide, approx. pH 7.4 State: Purified State: Liquid Ig fraction
Concentration:	lot specific
Purification:	Protein-A affinity chromatography; purity > 95% (by SDS-PAGE)
Conjugation:	Unconjugated
Storage:	Store undiluted at 2-8°C. DO NOT FREEZE!
Stability:	Shelf life: one year from despatch.
Background:	Immunoglobulin classes share the same basic four polypeptide chain structure of two heavy chains (five heavy chains types) and two light chains (kappa, lambda; both having a molecular weight of 22.5kDa). Kappa and lambda consist of a variable region and a constant region and can easily be differentiated by the antigenic properties of the constant region. The ratio of kappa to lambda is 70:30.



[View online »](#)

Product images:



Surface staining of lambda light chains in human peripheral blood with anti-lambda light chains (1-155-2) PE.