

Product datasheet for **AM26140FC-N**

Human Lambda Light Chain Mouse Monoclonal Antibody [Clone ID: 1-155-2]

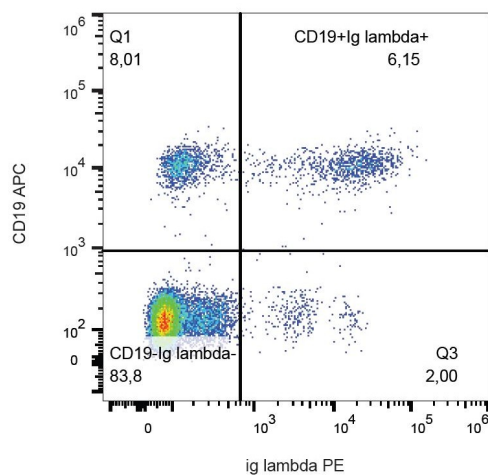
Product data:

Product Type:	Primary Antibodies
Clone Name:	1-155-2
Applications:	FC
Recommended Dilution:	Flow Cytometry analysis of human blood cells using 4 µl reagent / 100 µl of whole blood or 10 ⁶ cells in a suspension.
Reactivity:	Human
Host:	Mouse
Isotype:	IgG1
Clonality:	Monoclonal
Immunogen:	Human IgA1 lambda myeloma protein
Specificity:	This antibody recognizes lambda light chains (22.5 kDa) of human immunoglobulin.
Formulation:	PBS Label: FITC State: Liquid Ig fraction Stabilizer: Phosphate buffered saline (PBS) solution containing 15mM sodium azide Preservative: 15 mM sodium azide Label: Conjugated with Fluorescein isothiocyanate (FITC) under optimum conditions. The reagent is free of unconjugated FITC and adjusted for direct use.
Conjugation:	FITC
Storage:	Store the antibody at 2 - 8 °C. DO NOT FREEZE! This product is photosensitive and should be protected from light.
Stability:	Shelf life: one year from despatch.
Background:	Immunoglobulin classes share the same basic four polypeptide chain structure of two heavy chains (five heavy chains types) and two light chains (kappa, lambda ; both having a molecular weight of 22.5kDa). Kappa and lambda consist of a variable region and a constant region and can easily be differentiated by the antigenic properties of the constant region. The ratio of kappa to lambda is 70:30.



[View online »](#)

Product images:



Surface staining of lambda light chains in human peripheral blood with anti-lambda light chains (1-155-2) PE.