

## Product datasheet for **AM26139RP-N**

### LY75 (LY75-CD302) Mouse Monoclonal Antibody [Clone ID: HD30]

#### Product data:

Product Type:	Primary Antibodies
Clone Name:	HD30
Applications:	FC
Recommended Dilution:	Flow Cytometry analysis of human blood cells using 10 µl reagent / 100 µl of whole blood or 10e6 cells in a suspension. The content of a vial (1 ml) is sufficient for 100 tests.
Reactivity:	Human
Host:	Mouse
Isotype:	IgG1
Clonality:	Monoclonal
Immunogen:	Recombinant Fc-tagged human CD205
Specificity:	This antibody detects CD205.
Formulation:	Phosphate buffered saline (PBS) containing 15 mM sodium azide and 0.2% (w/v) high-grade protease free Bovine Serum Albumin (BSA) as a stabilizing agent Label: PE State: Liquid purified Ig fraction Label: Conjugated with R-Phycoerythrin under optimum conditions. The conjugate is purified by size-exclusion chromatography and adjusted for direct use
Conjugation:	PE
Storage:	Store the antibody at 2-8°C. <b>DO NOT FREEZE!</b> This product is photosensitive and should be protected from light.
Stability:	Shelf life: one year from despatch.
Gene Name:	LY75-CD302 readthrough
Database Link:	<a href="#">Entrez Gene 100526664 Human O60449</a>



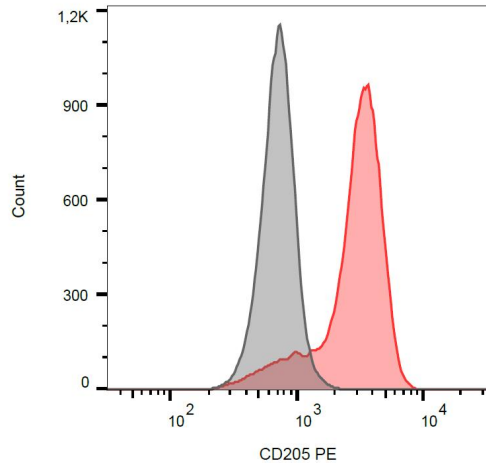
[View online »](#)

**Background:**

CD205, also known as DEC-205, is an endocytic receptor of macrophage mannose receptor family. This 205 kDa C-type lectin transmembrane protein mediates adsorptive uptake and its intracellular domain contains coated pit localization sequence and distal acidic motif, which is required for recycling beyond early endosomes through deeper MHC II+ late endosomes and lysosomes. This unique pathway of receptor-mediated uptake proves to be necessary for presentation of antigenic peptides at low doses of ligand. CD205 is responsible for uptake and processing of captured antigens for dendritic cells.

**Synonyms:**

LY75, CLEC13B, DEC205, gp200-MR6

**Product images:**

Surface staining of human peripheral blood monocytes with anti-CD205 (HD30) PE.