

Product datasheet for **AM26138AC-N**

CD163 Mouse Monoclonal Antibody [Clone ID: GHI/61]

Product data:

Product Type:	Primary Antibodies
Clone Name:	GHI/61
Applications:	FC
Recommended Dilution:	Flow Cytometry analysis of human blood cells using 10 µl reagent / 100 µl of whole blood or 10 ⁶ cells in a suspension. The content of a vial (1 ml) is sufficient for 100 tests.
Reactivity:	Human
Host:	Mouse
Isotype:	IgG1
Clonality:	Monoclonal
Immunogen:	Hairy cell leukemia cells
Specificity:	This antibody recognizes CD163, an approximately 130 kDa high affinity scavenger receptor expressed mainly on monocytes and macrophages, which binds hemoglobin-haptoglobin complex.
Formulation:	Phosphate buffered saline (PBS) Label: APC State: Liquid purified Ig fraction Stabilizer: 0.2% (w/v) high-grade protease free BSA Preservative: 15 mM Sodium Azide Label: Conjugated with cross-linked Allophycocyanin (APC) under optimum conditions. The conjugate is purified by size-exclusion chromatography and adjusted for direct use.
Conjugation:	APC
Storage:	Prior to and following reconstitution store the antibody at 2-8°C. DO NOT FREEZE! This product is photosensitive and should be protected from light.
Stability:	Shelf life: one year from despatch.
Gene Name:	CD163 molecule
Database Link:	Entrez Gene 9332 Human Q86VB7



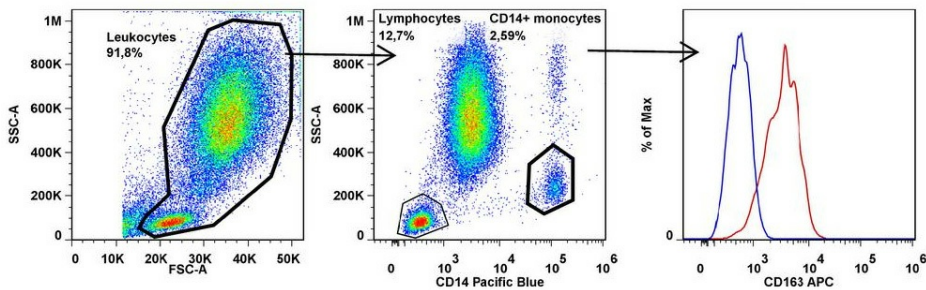
[View online »](#)

Background:

CD163, also known as M130, is a member of the scavenger receptor family, accounting for the clearance of hemoglobin-haptoglobin complexes during limited hemolysis, which protects the body, in particular the kidneys, against heme-mediated oxidative damages. It does not have measurable affinity for noncomplexed hemoglobin or haptoglobin. Immunomodulatory role of CD163 has been postulated. CD163 is expressed by cells of the monocyte-macrophage lineage and its extracellular part also circulates in plasma as a soluble protein, especially during sepsis and other conditions affecting macrophage activity, when its level may raise manyfold.

Synonyms:

M130, Hemoglobin scavenger receptor, Macrophage marker

Product images:


Surface staining of human peripheral blood using anti-human CD163 (clone GHI/61) APC. CD163 was detected on CD14+ monocytes, whereas CD14- lymphocytes were used as a negative control.