

Product datasheet for **AM26136PU-N**

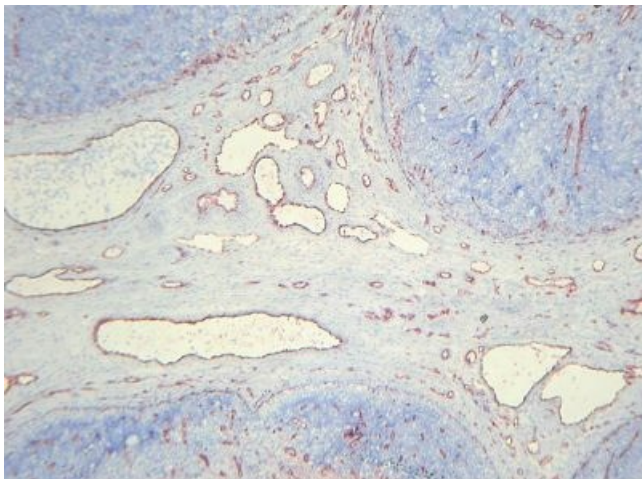
Endothelial Cells Mouse Monoclonal Antibody [Clone ID: PE1]

Product data:

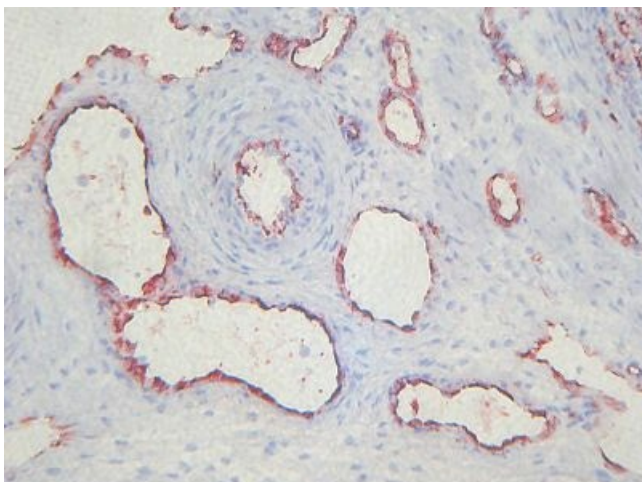
Product Type:	Primary Antibodies
Clone Name:	PE1
Applications:	ELISA, IHC
Recommended Dilution:	Immunohistochemistry, on frozen sections: 4µg/ml (1:50). ELISA. Does not react on routinely processed paraffin sections.
Reactivity:	Porcine
Host:	Mouse
Isotype:	IgG2b
Clonality:	Monoclonal
Immunogen:	Porcine platelet extract
Specificity:	This antibody recognizes platelets and discontinuously endothelial cells of blood vessels in various swine tissues. There is a strong staining of endothelial cells in the uterus, whereas in the spleen the staining is very faint. However, platelets in the spleen are stained strongly.
Formulation:	Phosphate buffered saline pH 7.2 (PBS), 5 mg/ml bovine serum albumin (BSA) as a stabilizer and 0.09 % sodium azide as a preservative. State: Aff - Purified State: Lyophilized Ig fraction
Reconstitution Method:	Reconstitute by adding 0.5 ml distilled water.
Purification:	Affinity chromatography
Conjugation:	Unconjugated
Storage:	Prior to reconstitution store at 2-8°C. Following reconstitution store (in aliquots) at -20°C. Avoid repeated freezing and thawing.
Stability:	Shelf life: one year from despatch.
Synonyms:	Endothelial Cell marker
Note:	Antigen distribution: Tissue sections: The antigen is expressed on platelets and not continuously in endothelial cells of various vessels of swine organs.



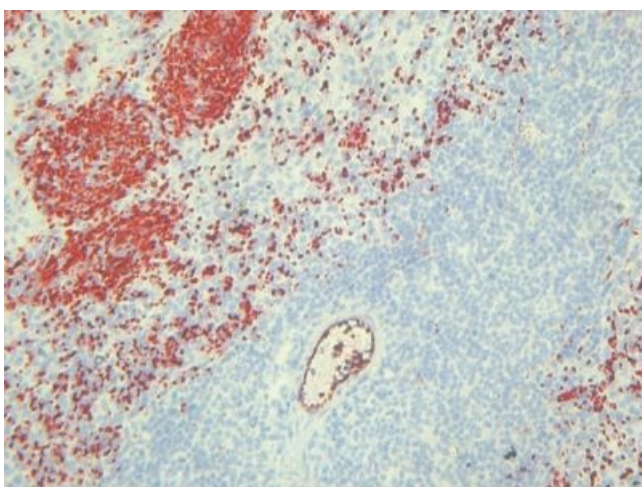
[View online »](#)

Product images:

Immunohistochemistry on frozen sections:
Staining with AM26136PU-N on swine lymph
node.



Immunohistochemistry on frozen sections:
Staining with AM26136PU-N on swine lymph
node.



Immunohistochemistry on frozen sections:
Staining with AM26136PU-N on swine spleen.