

Product datasheet for **AM26135PU-N**

Platelets Mouse Monoclonal Antibody [Clone ID: PP2]

Product data:

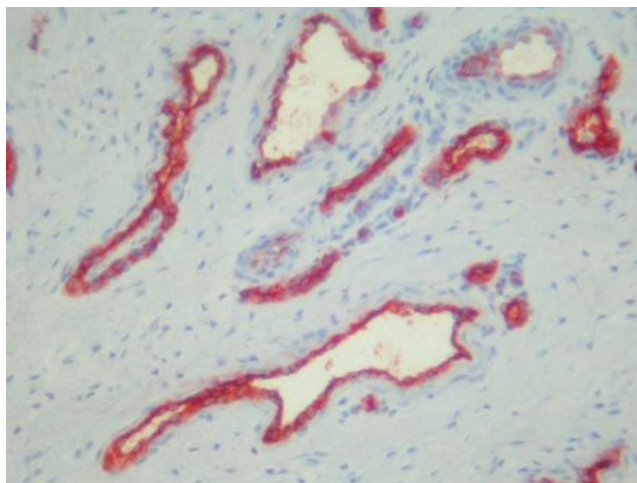
Product Type:	Primary Antibodies
Clone Name:	PP2
Applications:	ELISA, IHC
Recommended Dilution:	ELISA. Immunohistochemistry on frozen sections: 1 µg/ml (1:200). Does not react on routinely processed paraffin sections.
Reactivity:	Porcine
Host:	Mouse
Isotype:	IgG2a
Clonality:	Monoclonal
Immunogen:	Porcine platelet extract
Specificity:	This antibody recognizes platelets and discontinuously endothelial cells of blood vessels in various swine tissues. There is a strong staining of endothelial cells in the uterus, whereas in the spleen the staining is very faint. However, platelets in the spleen are stained strongly.
Formulation:	Phosphate buffered saline pH 7.2 (PBS), 5mg/ml bovine serum albumin (BSA) as a stabilizer and 0.09% sodium azide as a preservative. State: Aff - Purified State: Lyophilized Ig fraciton
Reconstitution Method:	Reconstitute by adding 0.5ml distilled water.
Purification:	Affinity chromatography
Conjugation:	Unconjugated
Storage:	Prior to reconstitution store at 2-8°C. Following reconstitution store (in aliquots) at -20°C. Avoid repeated freezing and thawing.
Stability:	Shelf life: one year from despatch.



[View online »](#)

Note: Antigen distribution:
Tissue sections: The antigen is expressed on platelets and discontinuously in endothelial cells of various blood vessels of swine organs. There is a strong staining of endothelial cells in the uterus, whereas in the spleen the staining is very faint. However, platelets in the spleen are stained strongly.

Product images:



Immunohistochemistry on frozen sections:
Staining of swine uterus with AM26135PU-N.