

Product datasheet for **AM26133PU-N**

Basal Membrane Mouse Monoclonal Antibody [Clone ID: PB1]

Product data:

Product Type:	Primary Antibodies
Clone Name:	PB1
Applications:	ELISA, IHC
Recommended Dilution:	ELISA. Immunohistochemistry on Frozen Sections: 1/200. Immunohistochemistry on Paraffin Sections: 1/30 (Proteinase K pretreatment for antigen retrieval is recommended).
Reactivity:	Human, Porcine
Host:	Mouse
Isotype:	IgM
Clonality:	Monoclonal
Immunogen:	Porcine lung extract
Specificity:	This antibody recognizes cells of the epithelial basement cell layer in various tissues.
Formulation:	PBS, pH 7.2 State: Purified State: Liquid purified Ig fraction Preservative: 0.09% Sodium Azide
Concentration:	1.0 mg/ml
Conjugation:	Unconjugated
Storage:	Store undiluted at 2-8°C for one month or (in aliquots) at -20°C for longer. Avoid repeated freezing and thawing.
Stability:	Shelf life: one year from despatch.
Synonyms:	Epithelial Basement cells



[View online »](#)

Note: **Antigen Distribution on Tissue sections:** Basal cell layer of various epithelia in different swine organs, e.g. basal cells in the epidermis of the skin, in bronchiolar epithelia of the lung and in cells of the macula densa in the kidney.

Protocol: Staining Procedure For Frozen And Paraffin-Embedded Tissue Sections

Protocol with frozen, ice-cold acetone-fixed sections:

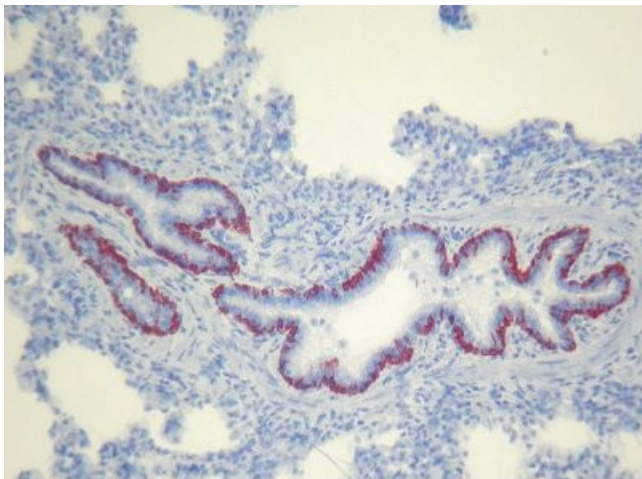
The whole procedure is performed at room temperature

1. Wash in PBS
2. Block endogenous peroxidase
3. Wash in PBS
4. Block with 10% normal goat serum in PBS for 30min. in a humid chamber
5. Incubate with primary antibody (dilution see datasheet) for 1h in a humid chamber
6. Wash in PBS
7. Incubate with secondary antibody (peroxidase-conjugated goat anti mouse IgM) for 1h in a humid chamber
8. Wash in PBS
9. Incubate with AEC substrate (3-amino-9-ethylcarbazol) for 12min.
10. Wash in PBS
11. Counterstain with Mayer's hemalum.

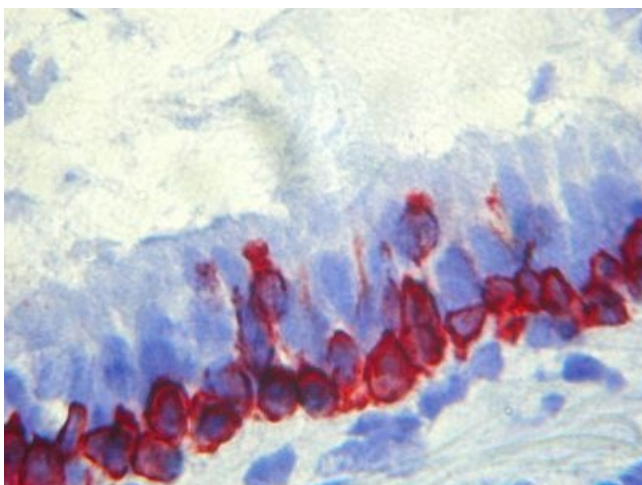
Protocol with formalin-fixed, paraffin-embedded sections:

The whole procedure is performed at room temperature

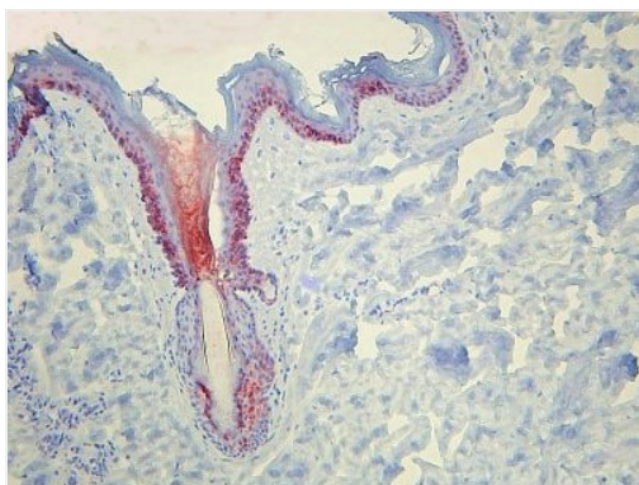
1. Deparaffinize and rehydrate tissue section
2. Incubate the tissue section with proteinase K for 7min
3. Block endogenous peroxidase
4. Wash in PBS
5. Block with 10% normal goat serum in PBS for 30min. in a humid chamber
6. Incubate with primary antibody (dilution see datasheet) for 1h in a humid chamber
7. Wash in PBS
8. Incubate with secondary antibody (peroxidase-conjugated goat anti mouse IgM) for 1h in a humid chamber
9. Wash in PBS
10. Incubate with AEC substrate (3-amino-9-ethylcarbazol) for 12min.
11. Wash in PBS
12. Counterstain with Mayer's hemalum

Product images:

Immunohistochemistry on frozen sections:
Staining with AM26133PU-N on Swine lung.



Immunohistochemistry on frozen sections:
Staining with AM26133PU-N on Swine lung.



Immunohistochemistry on frozen sections:
Staining with AM26133PU-N on Swine Skin