

## Product datasheet for **AM26131PU-N**

### **Mx1 Mouse Monoclonal Antibody [Clone ID: AM39]**

#### **Product data:**

Product Type:	Primary Antibodies
Clone Name:	AM39
Applications:	ELISA, WB
Recommended Dilution:	<b>ELISA.</b> <b>Western blot.</b>
Reactivity:	Bovine, Porcine
Host:	Mouse
Isotype:	IgG1
Clonality:	Monoclonal
Immunogen:	Recombinant Porcine Mx1 protein
Specificity:	This Monoclonal antibody AM39 recognizes the Porcine Mx1 protein.
Formulation:	Stock solution contains PBS, pH 7.2 with 5 mg/ml BSA as a stabilizer and 0.09% Sodium Azide as a preservative State: Aff - Purified State: Lyophilized purified Ig fraction
Reconstitution Method:	Restore by adding 0.5 ml distilled water.
Concentration:	0.4 mg/ml (after reconstitution)
Purification:	Affinity Chromatography
Conjugation:	Unconjugated
Storage:	Prior to reconstitution store at 2-8°C. Following reconstitution store undiluted at 2-8°C for one month or (in aliquots) at -20°C for longer. Avoid repeated freezing and thawing.
Stability:	Shelf life: one year from despatch.



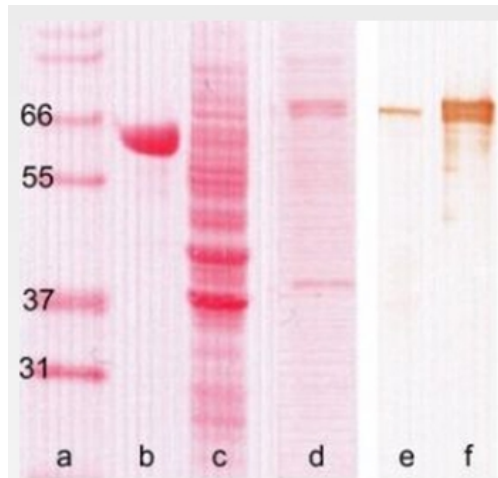
[View online »](#)

**Background:**

Mx proteins are cytoplasmic proteins induced by type-1 interferons ( $\alpha$  and  $\beta$ ) in leukocytes. However, there is a baseline level of expression even in the absence of viral infection. In humans, mainly monocytes and lymphocytes have been shown to express the Mx gene, whereas Mx expression is low in granulocytes. Mx proteins are high molecular weight GTPases of 70 - 80kD which belong to the dynamin superfamily. Mx proteins have a strong propensity to aggregate and form homooligomers. A unique property is their antiviral activity against many RNA viruses.

**Synonyms:**

Mx1 protein

**Product images:**


Western Blot with anti-Porcine MX1 Protein Monoclonal Antibody Cat.-No AM26131PU-N.a) Molecular Weight standards (kD)b) Bovine Serum Albumin (BSA)c) Porcine Leukocytes extractd) Recombinant Porcine Mx1e) Lane c developed with AM39f) Lane d developed with A