

Product datasheet for **AM26130PU-N**

Activated Macrophages Rat Monoclonal Antibody [Clone ID: 88a]

Product data:

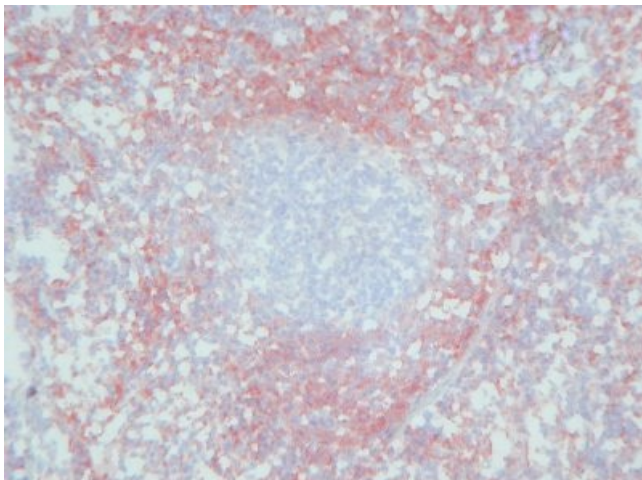
Product Type:	Primary Antibodies
Clone Name:	88a
Applications:	FC, IHC
Recommended Dilution:	Immunohistochemistry on frozen sections: 2 µg/ml (1:100). Has been described to work in FACS. Suggested positive control: Mouse spleen.
Reactivity:	Mouse
Host:	Rat
Isotype:	IgG2a
Clonality:	Monoclonal
Immunogen:	Supernatant of stimulated lymphocytes
Specificity:	This antibody detects Macrophages, dendritic cells, granulocytes.
Formulation:	Stock solution contains 0.2mg/ml IgG, phosphate buffered saline pH 7.2 (PBS), 10mg/ml bovine serum albumin (BSA) as a stabilizer and 0.01% thimerosal as a preservative. State: Aff - Purified State: Lyophilized Ig fraction
Reconstitution Method:	Reconstitute by adding 0.5ml distilled water.
Purification:	Affinity chromatography
Conjugation:	Unconjugated
Storage:	Prior to reconstitution store at 2-8°C. Following reconstitution store (in aliquots) at -20°C. Avoid repeated freezing and thawing.
Stability:	Shelf life: one year from despatch.
Background:	The antigen is a 200kD (glyco-)protein with unknown function. The antigen is expressed at low levels by bone marrow monocytes and granulocytes, and increases upon maturation in vitro. The expression is also enhanced after MIF treatment of macrophages. The antigen is displayed by both immature and mature Kupffer cells.



[View online »](#)

Note: Antigen distribution:
Isolated cells: The antigen is found on granulocytes, monocytes and bone marrow cells.
Tissue sections: The 88a antigen is found on dendritic cells in T- and B-cell areas as well as on marginal zone macrophages in lymphoid tissues. Typical macrophages in other organs show less or no expression of the 88a antigen.

Product images:



Immunohistochemistry on frozen sections: Clone 88a on mouse spleen.