

Product datasheet for **AM26129PU-N**

HLA Class II DR Mouse Monoclonal Antibody [Clone ID: EDU-1]

Product data:

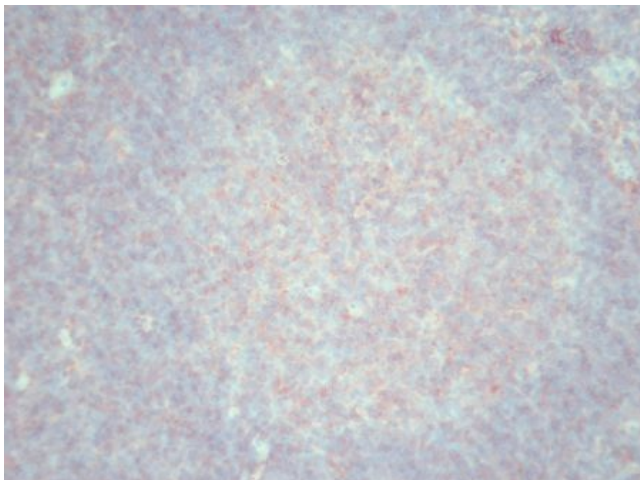
Product Type:	Primary Antibodies
Clone Name:	EDU-1
Applications:	FC, IHC
Recommended Dilution:	Immunohistochemistry on frozen sections: $\leq 0.1 \mu\text{g/ml}$ (1:2000). Has been described to work in FACS.
Reactivity:	Human
Host:	Mouse
Isotype:	IgG2b
Clonality:	Monoclonal
Specificity:	This antibody recognizes the HLA DR antigen, an HLA class II antigen with homology to murine H-2E.
Formulation:	Phosphate buffered saline pH 7.2 (PBS), 5mg/ml bovine serum albumin (BSA), and 0.09% sodium azide as a preservative. State: Aff - Purified State: Lyophilized Ig fraction
Reconstitution Method:	Reconstitute by adding 0.5ml distilled water.
Purification:	Affinity chromatography
Conjugation:	Unconjugated
Storage:	Prior to reconstitution store at 2-8°C. Following reconstitution store (in aliquots) at -20°C. Avoid repeated freezing and thawing.
Stability:	Shelf life: one year from despatch.
Background:	HLA-DR is an $\alpha\beta$ heterodimer. The N-terminal domain of the mature protein forms an alpha-helix that constitutes the exposed part of the binding groove, the C-terminal cytoplasmic region interacts with the other chain forming a beta-sheet under the binding groove spanning to the cell membrane.
Synonyms:	HLA-DR, HLA class II histocompatibility antigen DR, MHC class II antigen DR



[View online »](#)

Note: Antigen distribution:
Isolated cells: Antigen presenting cells (macrophages, Bcells and dendritic cells) are the cells in which DR are typically found.

Product images:



Immunohistochemistry on frozen sections:
Staining with AM26129PU-N on human tonsil.