

Product datasheet for **AM26129BT-N**

HLA Class II DR Mouse Monoclonal Antibody [Clone ID: EDU-1]

Product data:

Product Type:	Primary Antibodies
Clone Name:	EDU-1
Applications:	FC, IHC
Recommended Dilution:	Immunohistochemistry on Frozen Sections: 0.1 µg/ml (1/2000). Suggested Positive Control: Human tonsil. Has been described to work in FACS.
Reactivity:	Human
Host:	Mouse
Isotype:	IgG2b
Clonality:	Monoclonal
Specificity:	This antibody recognizes HLA DR antigen.
Formulation:	Phosphate buffered saline pH 7.2 (PBS) Label: Biotin State: Lyophilized purified Ig fraction Stabilizer: 5 mg/ml BSA Preservative: 0.05 % (v/v) Kathon CG
Reconstitution Method:	Restore by adding 0.5ml distilled water.
Concentration:	0.2 mg/ml (after reconstitution)
Purification:	Affinity Chromatography
Conjugation:	Biotin
Storage:	Store lyophilized at 2-8°C for 6 months or at -20°C long term. After reconstitution store the antibody undiluted at 2-8°C for one month or (in aliquots) at -20°C long term. Avoid repeated freezing and thawing.
Stability:	Shelf life: one year from despatch.



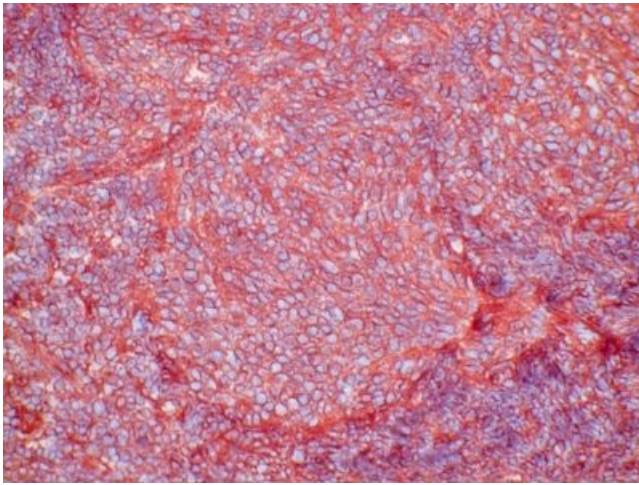
[View online »](#)

Background: HLA DR antigen is an HLA class II antigen with homology to murine H-2E. HLA-DR is an $\alpha\beta$ heterodimer. The N-terminal domain of the mature protein forms an alpha-helix that constitutes the exposed part of the binding groove, the C-terminal cytoplasmic region interacts with the other chain forming a beta-sheet under the binding groove spanning to the cell membrane.

Synonyms: HLA-DR, HLA class II histocompatibility antigen DR, MHC class II antigen DR

Note: **Antigen distribution:** Isolated cells: Antigen presenting cells (macrophages, B-cells and dendritic cells) are the cells in which DR are typically found.

Product images:



Human tonsil frozen section stained with AM26129BT-N (Clone EDU-1)