

Product datasheet for **AM26127PU-N**

MLV p30 Gag protein Mouse Monoclonal Antibody [Clone ID: 4B2]

Product data:

Product Type:	Primary Antibodies
Clone Name:	4B2
Applications:	ELISA, WB
Recommended Dilution:	Indirect ELISA: 0.05-0.1 µg/ml. <i>ELISA Titer:</i> 1/125000. Western blot: 0.5-1 µg/ml. <i>Quality Control:</i> Antigen recognition in ELISA and Western Blotting testing.
Reactivity:	Mouse
Host:	Mouse
Isotype:	IgG
Clonality:	Monoclonal
Immunogen:	Full length Recombinant MLV-Gag p30 capsid protein protein, purified from <i>E. coli</i>
Specificity:	This antibody detects MLV p30 Gag protein.
Formulation:	PBS, pH 7.4 State: Aff - Purified State: Liquid purified Ig fraction Preservative: 0.09% Sodium Azide
Concentration:	lot specific
Purification:	Affinity Chromatography on Protein G
Conjugation:	Unconjugated
Storage:	Upon receipt, store (in aliquots) at -20°C to -80°C. Avoid repeated freezing and thawing.
Stability:	Shelf life: one year from despatch.



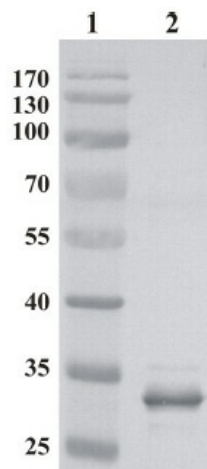
[View online »](#)

Background:

Murine leukemia viruses belong to family of Retroviruses group and are named for their ability to cause cancer in mice. Some form of MLV's are used in cancer research. The retroviral Gag protein plays important roles at several stages in the viral life cycle. Late in infection, the Gag precursor protein acts to mediate the assembly and release of virion particles. After budding, the core matures by cleavage of Gag precursor protein into the mature core proteins, the matrix (MA), capsid (CA) and nucleocapsid proteins. These separated Gag proteins then play roles in the early stages of infection.

Synonyms:

Murine Leukemia Virus p30 protein, MLV-Gag p30

Product images:

Western Blot testing of MLVgag antibody, clone 4B2 Cat.-No AM26127PU-N. Lane 1: PageRuler Prestained Protein Ladder. Lane 2: MLV-gag p30 recombinant protein expressed in E. coli.