

## Product datasheet for **AM26122PU-N**

### HCV NS5B RdRp (111-130) Mouse Monoclonal Antibody [Clone ID: 9A2]

#### Product data:

Product Type:	Primary Antibodies
Clone Name:	9A2
Applications:	ELISA, IF, IP, WB
Recommended Dilution:	Reacts in <b>ELISA, Western blot and Immunoprecipitation</b> with genotype 1b (con-1) HCV NS5B protein. <b>ELISA:</b> 1/1000. <b>Western blot</b> (reduced conditions): 1/1000. <b>Immunofluorescence:</b> 1/500.
Reactivity:	Human
Host:	Mouse
Isotype:	IgG1
Clonality:	Monoclonal
Immunogen:	Recombinant Hepatitis C Virus nonstructural protein 5B (NS5B) RNAdependent RNA polymerase (RdRp)
Specificity:	This antibody detects Hepatitis C virus NS5B-protein (aa 111-130). Human, HCV subtype 1b NS5B, Epitope mapped to amino acids 111-130 (LSSKAVNHRSVWVDLLED).
Formulation:	PBS pH 7.4 State: Aff - Purified State: Liquid purified Ig fraction Preservative: 0.09% Sodium Azide
Concentration:	lot specific
Purification:	Protein G affinity chromatography
Conjugation:	Unconjugated
Storage:	Upon receipt, store (in aliquots) at -20 to -70°C. Avoid repeated freezing and thawing.
Stability:	Shelf life: One year from despatch.

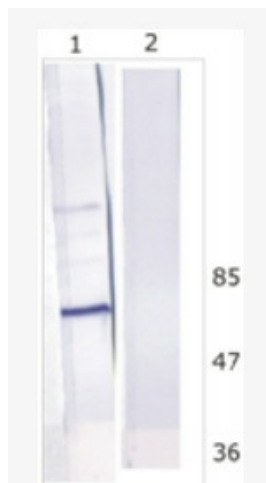


[View online »](#)

**Background:** Non-structural protein 5B (NS5B) represents the RNA-dependent RNA polymerase (RdRp) of Hepatitis C Virus, which is a small positive strand RNA virus in the family Flaviviridae. HCV is a major causative agent of acute and chronic hepatitis, hepatocellular carcinoma and liver cirrhosis. The single subunit RNA-dependent RNA polymerase is absolutely essential for the viral replication.

**Synonyms:** Hepatitis C Virus, RNA-directed RNA polymerase NS5B

**Product images:**



Western Blot analysis of Huh-7 cell line expressing NS5B protein. Detected by 9A2 antibody. Line 1. Huh-7 transfected with HCV replicon, Line 2. Huh-7 non-transfected cells.



IP was carried out with NS5B specific mAb 9A2 using the lysates of Huh7 cells harboring selectable subgenomic HCV RNA replicon (upper panel) or plain Huh7 cells (lower panel). NS5B polyclonal antibodies (alpha-NS5B) and alpha-Bcl2 mAb, directed against cel