

Product datasheet for **AM26120PU-N**

HCV NS5B RdRp (92-105) Mouse Monoclonal Antibody [Clone ID: 7G8]

Product data:

Product Type:	Primary Antibodies
Clone Name:	7G8
Applications:	ELISA, FN, IP, WB
Recommended Dilution:	Reacts in ELISA, Western Blot, Immunoprecipitation with genotype 1b (con-1) HCV NS5B protein. ELISA: 1/1000. Western blot (Reduced Conditions): 1/1000.
Reactivity:	Human
Host:	Mouse
Isotype:	IgG1
Clonality:	Monoclonal
Immunogen:	Recombinant Hepatitis C Virus nonstructural protein 5B (NS5B) RNA-dependent RNA polymerase (RdRp)
Specificity:	This antibody reacts with Human, HCV subtype 1b NS5B, Epitope mapped to amino acids 95-105 (TPPHSARSKFGYGA). Blocks the RNA-dependent RNA polymerase activity <i>in vitro</i>.
Formulation:	PBS pH 7.4 State: Aff - Purified State: Liquid purified Ig fraction Preservative: 0.09% Sodium Azide
Concentration:	lot specific
Purification:	Affinity Chromatography on Protein G
Conjugation:	Unconjugated
Storage:	Upon receipt, store (in aliquots) at -20 to -70°C. Avoid repeated freezing and thawing.
Stability:	Shelf life: One year from despatch.



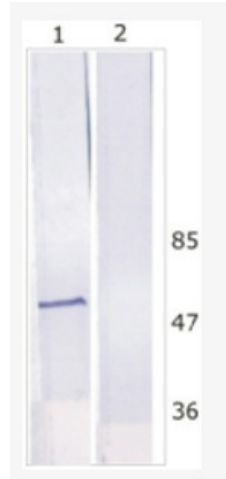
[View online »](#)

Background:

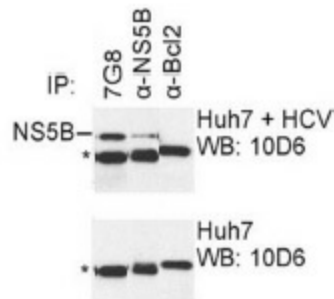
Non-structural protein 5B (NS5B) represents the RNA-dependent RNA polymerase (RdRp) of Hepatitis C Virus, which is a small positive strand RNA virus in the family Flaviviridae. HCV is a major causative agent of acute and chronic hepatitis, hepatocellular carcinoma and liver cirrhosis. The single subunit RNA-dependent RNA polymerase is absolutely essential for the viral replication.

Synonyms:

Hepatitis C Virus, RNA-directed RNA polymerase NS5B

Product images:


Western Blot analysis of Huh-7 cell line expressing NS5B protein. Line 1. Huh-7 transfected with HCV replicon, Line 2. Huh-7 non-transfected cells.



IP was carried out with NS5B specific mAb 7G8 using the lysates of Huh7 cells harboring selectable subgenomic HCV RNA replicon (upper panel) or plain Huh7 cells (lower panel). NS5B polyclonal antibodies (alpha-NS5B) and alpha-Bcl2 mAb, directed against cel