

Product datasheet for **AM26114PU-N**

HPV11 E7 Protein (1-35) Mouse Monoclonal Antibody [Clone ID: 8G6]

Product data:

Product Type:	Primary Antibodies
Clone Name:	8G6
Applications:	ELISA, IF, IP, WB
Recommended Dilution:	Immunofluorescence. Immunoprecipitation: 1:500. ELISA (using recombinant HPV-11): 1:64 000. Western blot (using recombinant HPV-11): 1:1000.
Reactivity:	Human
Host:	Mouse
Isotype:	IgG2a
Clonality:	Monoclonal
Immunogen:	Recombinant full-length HPV-11 E7-protein purified from E. coli
Specificity:	This antibody detects HPV-11 E7-protein at aa 1 - 35. Reacts with HPV-11 native E7-protein as well recombinant E7 protein expressed in bacteria and Cos-7 cells.
Formulation:	PBS pH 7.4, with 0.09% sodium azide State: Aff - Purified State: Liquid Ig fraction
Concentration:	lot specific
Purification:	Affinity chromatography
Conjugation:	Unconjugated
Storage:	Upon receipt, store (in aliquots) at -20 to -70 °C. Avoid repeated freezing and thawing.
Stability:	Shelf life: One year from despatch.
Database Link:	P04020



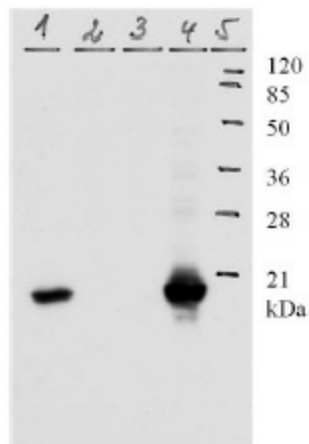
[View online »](#)

Background:

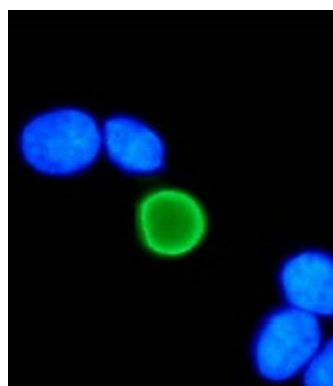
Human papillomaviruses (HPV) are small DNA viruses which infect epithelia of the skin and mucosa. Over 90 types have been identified and they mostly cause a variety of benign lesions such as warts and verrucae. However, some subtypes, notably types 16 and 18, 31 and 33, have been confirmed as agents which cause cervical cancer. Human Papillomavirus (HPV) E2 proteins are the major viral regulators of transcription and replication during the viral life cycle.

Synonyms:

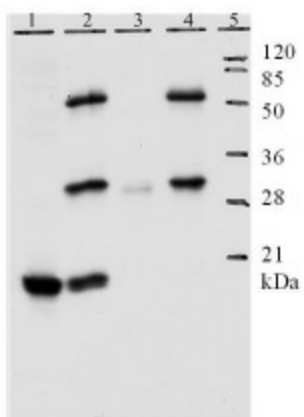
Human Papilloma Virus type 11 Early Protein E7

Product images:

Western blot analysis of HPV-11 E7 protein. WB was carried out with 8G6 Mab using the lysates of U2OS and HeLa cells. Lines 1 and 4 are according cells transfected with plasmid expressing HPV-11 E7 protein, Lines 2 and 3 non-transfected U2OS and HeLa cells



ICC analysis of HPV-11 E7 protein in U2OS cells. IF was carried out with U2OS cells transfected with plasmid expressing HPV-11 E7 protein. All the nuclei were stained by DAPI. Green color represents nucleus-localized HPV-11 E7 detected by Mab 8G6. IF analys



IP analysis of HPV-11 E7 protein. Line 1. shows detection of E7 protein by mAB 8G6 in lysate of U20S cells. Line 2. the lower band is precipitated E7, upper bands are light and heavy chain of Mab. Line 3. precipitation without mAB 8G6 Line 4. Nontransfecte