

Product datasheet for **AM26113PU-N**

HPV11 E2 protein (202-284) Mouse Monoclonal Antibody [Clone ID: 10E12]

Product data:

Product Type:	Primary Antibodies
Clone Name:	10E12
Applications:	ELISA, IF, WB
Recommended Dilution:	Immunofluorescence. Titer using recombinant HPV-11 E2- protein: ELISA: 1:32 000. Western blot: 1:1000. The antibody does NOT work in Immunoprecipitation!
Reactivity:	Human
Host:	Mouse
Isotype:	IgG1
Clonality:	Monoclonal
Immunogen:	Recombinant full-length HPV-11 E2-protein purified from E. coli
Specificity:	This antibody detects HPV-11 E2 protein at aa 202-284. Reacts in WB and ELISA with HPV-11 native E2-protein as well recombinant E2-protein expressed in bacteria and Cos-7 cells.
Formulation:	PBS pH 7.4, with 0.09% sodium azide State: Aff - Purified State: Liquid Ig fraction
Concentration:	lot specific
Purification:	Affinity chromatography
Conjugation:	Unconjugated
Storage:	Upon receipt, store (in aliquots) at -20 to -70 °C. Avoid repeated freezing and thawing.
Stability:	Shelf life: One year from despatch.
Database Link:	P04015



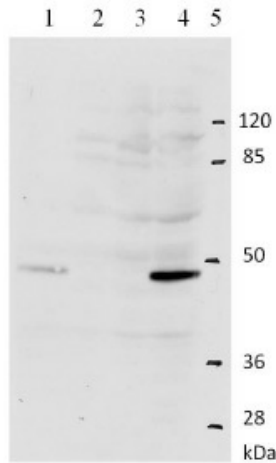
[View online »](#)

Background:

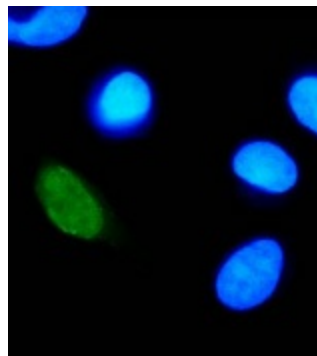
Human papillomaviruses (HPV) are small DNA viruses which infect epithelia of the skin and mucosa. Over 90 types have been identified and they mostly cause a variety of benign lesions such as warts and verrucae. However, some subtypes, notably types 16 and 18, 31 and 33, have been confirmed as agents which cause cervical cancer. Human Papillomavirus (HPV) E2 proteins are the major viral regulators of transcription and replication during the viral life cycle.

Synonyms:

Human papilloma virus type 11, HPV-11 E2, HPV11 E2

Product images:


Western blot analysis of HPV-11 E2 protein. WB was carried out with 10E12 Mab using the lysates of U2OS and HeLa cells. Lines 1 and 4 are according cells transfected with plasmid expressing HPV-11 E2 protein, lines 2 and 3 Nontransfected U2OS and HeLa cell



IF analysis of HPV-11 E2 protein in U2OS cells. IF was carried out with U2OS cells transfected with plasmid expressing HPV-11 E2 protein. All the nuclei were stained by DAPI. Green color represents nucleus-localized HPV-11 E2 detected by Mab 10E12. IF analy