

## Product datasheet for **AM26110PU-N**

### Laminin alpha 5 (LAMA5) Mouse Monoclonal Antibody [Clone ID: 4B12]

#### Product data:

Product Type:	Primary Antibodies
Clone Name:	4B12
Applications:	ELISA, IF, IHC, IP
Recommended Dilution:	<b>ELISA:</b> 1/8000. <b>Immunoprecipitation:</b> 1/20. <b>Immunohistochemistry:</b> 1/100–1/200. This antibody <b>does Not</b> work in Western blot!
Reactivity:	Human
Host:	Mouse
Isotype:	IgG1
Clonality:	Monoclonal
Immunogen:	Laminin purified from Human placenta (Chemicon)
Specificity:	This antibody detects Laminin alpha 5.
Formulation:	PBS, pH 7.4 State: Purified State: Liquid purified Ig fraction Preservative: 0.09% Sodium Azide
Concentration:	lot specific
Purification:	Affinity Chromatorgraphy on Protein G
Conjugation:	Unconjugated
Storage:	Store undiluted at 2-8°C for one month or (in aliquots) at -20°C for longer. Avoid repeated freezing and thawing.
Stability:	Shelf life: one year from despatch.
Gene Name:	laminin subunit alpha 5
Database Link:	<a href="#">Entrez Gene 3911 Human</a> <a href="#">O15230</a>



[View online »](#)

**Background:**

Laminins are a family of large heterotrimeric proteins that promote cell adhesion and migration via integrins and other cell surface receptors. They are major components of basement membranes of blood vessels and other tissue compartments, and are synthesized by numerous cell types. Through combination, laminin chains constitute 15 laminin isoforms. Laminin isoforms, particularly their  $\alpha$  chain, are expressed in a cell- and tissue-specific manner, and are differentially recognized by integrins.

**Synonyms:**

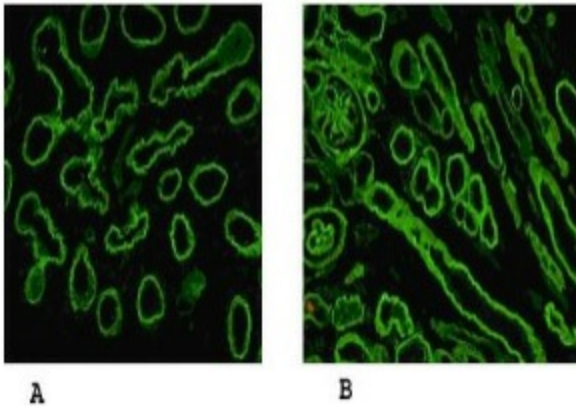
LAMA5, KIAA0533, KIAA1907, Laminin subunit alpha-5

**Protein Families:**

Druggable Genome

**Protein Pathways:**

ECM-receptor interaction, Focal adhesion, Pathways in cancer, Small cell lung cancer

**Product images:**

Reactivity of Laminin alpha-5 chain specific monoclonal antibody 4B12 on Human embryonic lung alveolae epithelium (A) and kidney (B) preparation.