

Product datasheet for **AM26107PU-N**

Laminin alpha 4 (LAMA4) Mouse Monoclonal Antibody [Clone ID: 3H2]

Product data:

Product Type:	Primary Antibodies
Clone Name:	3H2
Applications:	ELISA, IHC, IP, WB
Recommended Dilution:	ELISA: 1:64 000. Western blot (reduced conditions): 1:1 000 - 1:2 000. Immunoprecipitation: 1:20. Immunohistochemistry on frozen sections: 1:100 - 1:200.
Reactivity:	Human
Host:	Mouse
Isotype:	IgG1
Clonality:	Monoclonal
Immunogen:	Immunoaffinity-purified Laminin 411 (laminin-8 (alpha4beta1gamma1) from platelets
Specificity:	This antibody detects Laminin alpha 4.
Formulation:	PBS pH 7.4, with 0.09% sodium azide State: Purified State: Liquid Ig fraction
Concentration:	lot specific
Purification:	Ion exchange chromatography
Conjugation:	Unconjugated
Storage:	Upon receipt, store (in aliquots) at -20 to -70 °C. Avoid repeated freezing and thawing.
Stability:	Shelf life: One year from despatch.
Gene Name:	laminin subunit alpha 4
Database Link:	Entrez Gene 3910 Human Q16363



[View online »](#)

Background:

Laminins are a family of large heterotrimeric proteins that promote cell adhesion and migration via integrins and other cell-surface receptors. They are major components of basement membranes of blood vessels and other tissue compartments, and are synthesized by numerous cell types. Through combination, laminin chains constitute 15 laminin isoforms. Laminin isoforms, particularly their alpha chain, are expressed in a cell and tissue-specific manner, and are differentially recognized by integrins.

Synonyms:

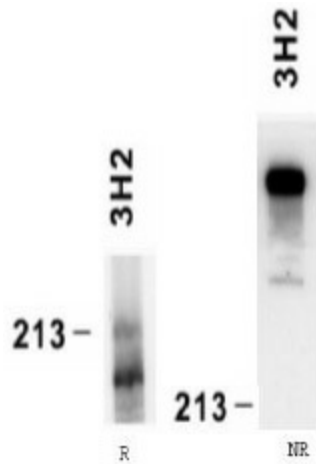
LAMA4, Laminin subunit alpha-4

Protein Families:

Druggable Genome, Secreted Protein

Protein Pathways:

ECM-receptor interaction, Focal adhesion, Pathways in cancer, Small cell lung cancer

Product images:

Reactivity of laminin alpha4 chain specific monoclonal antibody 3H2 on human platelet lysate by Western blotting (reducing, R and nonreducing, NR conditions).