

Product datasheet for **AM26102PU-N**

BPV-1 Protein E2 (208-218) Mouse Monoclonal Antibody [Clone ID: 1H10]

Product data:

Product Type:	Primary Antibodies
Clone Name:	1H10
Applications:	IF, WB
Recommended Dilution:	Immunofluorescence (1/1000): Dilute antibody to a concentration of 1-2 µg/ml in a diluent containing 1% BSA in PBS. Incubate with diluted antibody for 1 hour at room temperature. Western blot (1/1000–1/5000): Dilute to a concentration of 1.0-0.2 µg/ml in a diluent containing 2% non-fat dry milk in TBST (Tris-Buffered Saline, Tween-20). Incubate the membrane with diluted the antibody for 1 hour at room temperature with gentle orbital shaking.
Reactivity:	Bovine
Host:	Mouse
Isotype:	IgG1
Clonality:	Monoclonal
Immunogen:	Recombinant full length BPV type 1 E2 protein purified from <i>E. coli</i>
Specificity:	This antibody detects Bovine Papillomavirus E2-protein and E10Tag (mapped to aa 208-218).
Formulation:	PBS with 50% Glycerol State: Aff - Purified State: Liquid purified Ig fraction
Concentration:	lot specific
Purification:	Affinity Chromatography on Protein A
Conjugation:	Unconjugated
Storage:	Upon receipt, store (in aliquots) at -20 to -70°C. Avoid repeated freezing and thawing.
Stability:	Shelf life: One year from despatch.
Database Link:	P03122



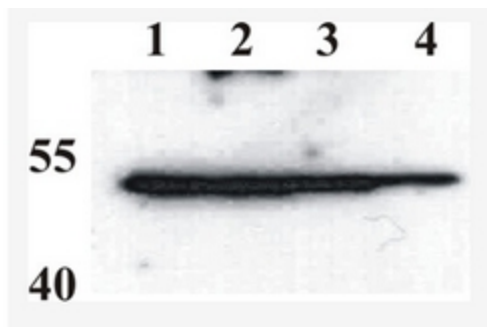
[View online »](#)

Background:

The bovine papilloma virus E2 protein is the master regulator of papillomavirus replication and transcription. Binds to the E2RE response element (5'-ACCNNNNNNGGT-3') present in multiple copies in the regulatory region. Can either activate or repress transcription depending on E2RE's position with regards to proximal promoter elements. Repression occurs by sterically hindering the assembly of the transcription initiation complex. The E1-E2 complex binds to the origin of DNA replication.

Synonyms:

BPV1 Regulatory protein E2

Product images:

Western Blot testing of anti-BPV E2 monoclonal antibody (1E2). Testing recombinant purified BPV E2 protein-. Different BPV E2 dilutions were used for testing. Line 1: 10 ng, Line 2: 5 ng, Line 3: 1 ng, Line 4: 0.5 ng