

Product datasheet for **AM26101PU-N**

BPV-1 Protein E2 (182-190) Mouse Monoclonal Antibody [Clone ID: 1E2]

Product data:

Product Type:	Primary Antibodies
Clone Name:	1E2
Applications:	IF, IP, WB
Recommended Dilution:	Western blot: 1/500 – 1/2000; dilute to a concentration of 4.0-0.5 µg/ml in a diluent containing 2% non-fat dry milk in TBST (Tris-Buffered Saline, Tween-20). Incubate the membrane with diluted anti-E4Tag antibody for 1 hour at room temperature with gentle orbital shaking. Immunofluorescence: 1/1000; dilute anti-E4Tag antibody to a concentration of 1-2 µg/ml in a diluent containing 1% BSA in PBS. Incubate with diluted anti-E4Tag antibody for 1 hour at room temperature. Immunoprecipitation: Isolates E4Tag-tagged proteins and associated proteins/protein binding partners. This antibody belongs to the IgG1 subclass, thus, we recommend using protein G-agarose for binding experiments. ELISA.
Reactivity:	Bovine
Host:	Mouse
Isotype:	IgG1
Clonality:	Monoclonal
Specificity:	This antibody detects E4Tag and Bovine Papillomavirus E2- protein, mapped to amino acids 182-190 (TTGHYSVRD).
Formulation:	PBS State: Aff - Purified State: Liquid purified Ig fraction Stabilizer: 50% glycerol
Concentration:	lot specific
Purification:	Protein A affinity chromatography
Conjugation:	Unconjugated



[View online »](#)

Storage: Upon receipt, store undiluted (in aliquots) at -20°C.
Avoid repeated freezing and thawing.

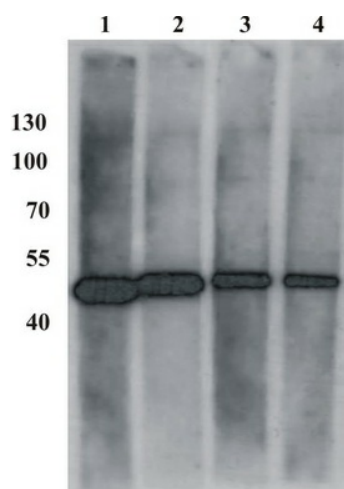
Stability: Shelf life: one year from despatch.

Database Link: [P03122](#)

Background: The bovine papilloma virus E2 protein is the master regulator of papillomavirus replication and transcription. Binds to the E2RE response element (5'-ACCNNNNNNGGT-3') present in multiple copies in the regulatory region. Can either activate or repress transcription depending on E2RE's position with regards to proximal promoter elements. Repression occurs by sterically hindering the assembly of the transcription initiation complex. The E1-E2 complex binds to the origin of DNA replication.

Synonyms: BPV1 Regulatory protein E2

Product images:



Western Blot testing of anti-BPV E2 monoclonal antibody (Cat.-No.: AM26101PU-N). Testing BPV E2 protein-expressing Cos7 cell lysate. Different antibody dilutions were used for testing.