

Product datasheet for **AM26099PU-N**

BPV-1 E2 tag (SSTSSDFRDR) Mouse Monoclonal Antibody [Clone ID: 5E11]

Product data:

Product Type:	Primary Antibodies
Clone Name:	5E11
Applications:	IF, IP, WB
Recommended Dilution:	Western blot (1/1000–1/5000): Dilute to a concentration of 1.0-0.2 µg/ml in a diluent containing 2% non-fat dry milk in TBST (Tris-Buffered Saline, Tween-20) (Background can be reduced by adding NaCl up to a concentration of 1.5 M). Incubate the membrane with diluted anti-E2Tag antibody for 1 hour at room temperature with gentle orbital shaking. Immunofluorescence (1/1000): Dilute anti-E2Tag antibody to a concentration of 1-2 µg/ml in a diluent containing 1% BSA in PBS. Incubate with diluted anti-E2Tag antibody for 1 hour at room temperature. Immunoprecipitation. This antibody belongs to the IgG1 subclass, thus, we recommend using protein G-Agarose for Binding experiments.
Reactivity:	Bovine
Host:	Mouse
Isotype:	IgG1
Clonality:	Monoclonal
Immunogen:	Recombinant full length BPV type 1 E2 protein purified from <i>E. coli</i>
Specificity:	This antibody detects Bovine Papillomavirus E2-protein mapped to aa 199-208 (E2Tag, SSTSSDFRDR). Isolates E2 Tag-tagged proteins and associated proteins/protein binding partners by Immunoprecipitation.
Formulation:	PBS with 50% Glycerol State: Aff - Purified State: Liquid purified Ig fraction
Concentration:	lot specific
Purification:	Affinity Chromatography on Protein A
Conjugation:	Unconjugated



[View online »](#)

Storage: Upon receipt, store (in aliquots) at -20°C to -70 °C.
Avoid repeated freezing and thawing.

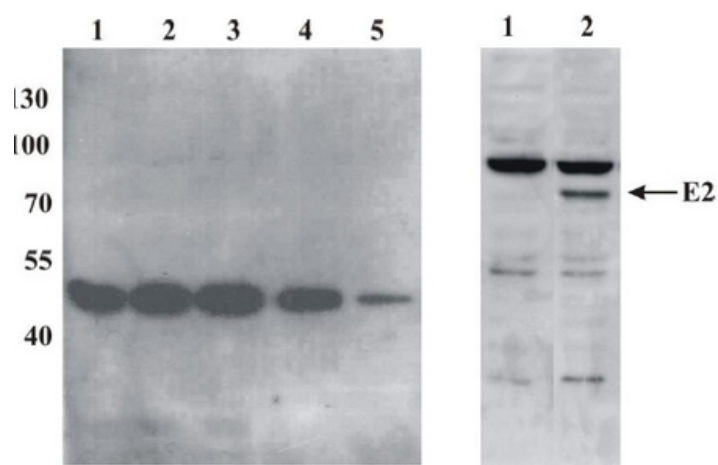
Stability: Shelf life: One year from despatch.

Database Link: [P03122](#)

Background: The bovine papilloma virus E2 protein is the master regulator of papillomavirus replication and transcription. Binds to the E2RE response element (5'-ACCNNNNNNGGT-3') present in multiple copies in the regulatory region. Can either activate or repress transcription depending on E2RE's position with regards to proximal promoter elements. Repression occurs by sterically hindering the assembly of the transcription initiation complex. The E1-E2 complex binds to the origin of DNA replication.

Synonyms: BPV1, Bovine Papilloma Virus Protein E2

Product images:



Western Blot testing of anti-BPV E2 monoclonal antibody (5E11). Left panel: Testing of purified recombinant BPV E2. Different amount of purified protein was loaded into the gel: Line 1. 30 ng, Line 2: 15 ng, Line 3: 10 ng, Line 4: 5 ng, Line 5: 1 ng. Right pa