

Product datasheet for **AM26089PU-N**

HIV-1 Gag Capsid protein p24 Mouse Monoclonal Antibody [Clone ID: 5 (05-001)]

Product data:

Product Type:	Primary Antibodies
Clone Name:	5 (05-001)
Applications:	ELISA, IF, WB
Recommended Dilution:	precipitation. ELISA: 1/64000. Western blot: 1/1000. Immunofluorescence: 1/1000. Use in U2OS, CHO and 293-based cell lines.
Reactivity:	Human Immunodeficiency Virus 1
Host:	Mouse
Isotype:	IgG2a
Clonality:	Monoclonal
Immunogen:	Recombinant p24 protein of HIV-1 HAN consensus (purified from E. coli)
Specificity:	This antibody detects HIV-1 p24 protein, mapped to amino acids 48-62 (TPQDLNMLNTVGGH – HIV-1 HXB2). Reacts with HIV-1 native p24 as well rp24 expressed in bacteria and Cos-7 cells. This antibody reacts with rNef of HIV- 1 subtype B, C and A.
Formulation:	PBS pH 7.4 State: Aff - Purified State: Liquid purified Ig fraction Preservative: 0.09% Sodium Azide
Concentration:	lot specific
Purification:	Affinity Chromatography on Protein G
Conjugation:	Unconjugated
Storage:	Upon receipt, store (in aliquots) at -20 to -70°C. Avoid repeated freezing and thawing.
Stability:	Shelf life: One year from despatch.



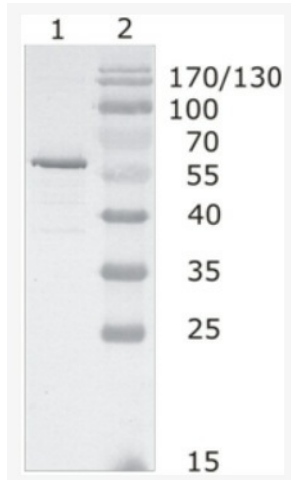
[View online »](#)

Background:

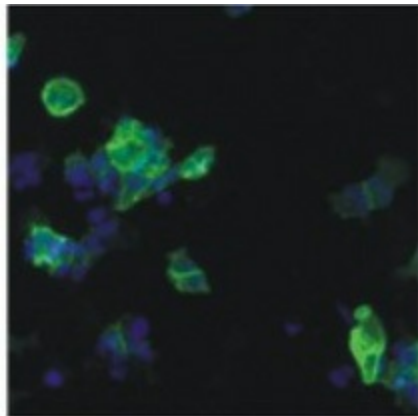
HIV is a highly variable virus which mutates very readily. This means there are many different strains of HIV, even within the body of a single infected person. The strains of HIV1 can be classified into three groups: the "major" group M, the "outlier" group O and the "new" group N. These three groups may represent three separate introductions of simian immunodeficiency virus into humans. Group O appears to be restricted to West-Central Africa and group N, discovered in 1998 in Cameroon, is extremely rare. More than 90% of HIV1 infections belong to HIV1 group M.

Synonyms:

HIV1, HIV-I, Human immunodeficiency virus type 1

Product images:


Western-Blot analysis of HIV-1 HAN subtype gag protein using HIV-1 p24 (05-001) antibody. Line 1. Recombinant HIV-1 HAN-2 subtype gag expressed in composition of virus like particles (VLPs) using 293-based cell line. Line 2. Protein size



IF analysis using HIV-1 p24 antibody (05-001) in detection of 05-001 epitope tagged ETAR (Endothelin A receptor) in HEK293-based cell line.