

Product datasheet for **AM26088PU-N**

HIV-1 Rev Protein Mouse Monoclonal Antibody [Clone ID: 10 (03-002)]

Product data:

Product Type:	Primary Antibodies
Clone Name:	10 (03-002)
Applications:	ELISA, IHC, IP, WB
Recommended Dilution:	ELISA: 1/10000. Western blot: 1/500. Immunoprecipitation. Immunohistochemistry on Frozen Sections.
Reactivity:	Human
Host:	Mouse
Isotype:	IgG1
Clonality:	Monoclonal
Immunogen:	Recombinant Rev protein of HIV-1 BRV (purified from E.coli).
Specificity:	This antibody detects HIV-1 Rev protein, mapped to amino acids 34-40 (TRGARRN – subtype B aa consensus).
Formulation:	PBS pH 7.4 State: Aff - Purified State: Liquid purified Ig fraction Preservative: 0.09% Sodium Azide
Concentration:	lot specific
Purification:	Affinity Chromatography on Protein G
Conjugation:	Unconjugated
Storage:	Upon receipt, store (in aliquots) at -20°C to -80°C. Avoid repeated freezing and thawing.
Stability:	Shelf life: one year from despatch.



[View online »](#)

Background:

HIV is a highly variable virus which mutates very readily. This means there are many different strains of HIV, even within the body of a single infected person. The strains of HIV1 can be classified into three groups: the "major" group M, the "outlier" group O and the "new" group N. These three groups may represent three separate introductions of simian immunodeficiency virus into humans. Group O appears to be restricted to West-Central Africa and group N, discovered in 1998 in Cameroon, is extremely rare. More than 90% of HIV1 infections belong to HIV1 group M.

Synonyms:

HIV1, HIV-I, Human immunodeficiency virus type 1

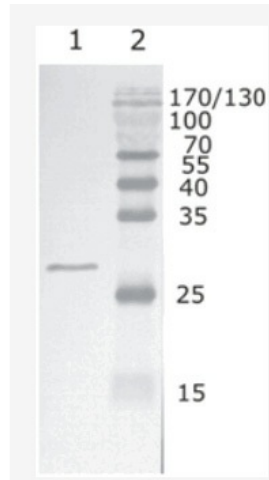
Product images:

Figure 1: Western Blot testing of HIV-1 recombinant Rev protein. using HIV-1 Rev antibody, clone 1. Line 1. Recombinant HIV-1 Rev (B subtype) Line 2. Protein size marker