

## Product datasheet for **AM26084PU-N**

### HIV-1 Tat (2-9) Mouse Monoclonal Antibody [Clone ID: 15.1 (02-003)]

#### Product data:

<b>Product Type:</b>	Primary Antibodies
<b>Clone Name:</b>	15.1 (02-003)
<b>Applications:</b>	ELISA, WB
<b>Recommended Dilution:</b>	Reacts in ELISA and Western blot with HIV-1 Tat of BH10, IIIB strains. Titer using rTat protein BH10. <b>ELISA:</b> 0.2-1 µg/ml. <b>Western blot:</b> 2 µg/ml.
<b>Reactivity:</b>	Human
<b>Host:</b>	Mouse
<b>Isotype:</b>	IgG1
<b>Clonality:</b>	Monoclonal
<b>Immunogen:</b>	Recombinant HIV-1 Tat protein BH10 (purified from E. coli)
<b>Specificity:</b>	This antibody detects HIV-1 Tat protein. Mapped to amino acids 2-9 (EPVDPRLE - B subtype a.a. consensus). It reacts with the rTat consensus sequences of HIV-1 subtypes A (DPVDPNLE), B (EPVDPRLE) and C (EPVDPNLE).
<b>Formulation:</b>	PBS pH 7.4, with 0.09% Sodium Azide State: Aff - Purified State: Liquid purified IgG fraction
<b>Concentration:</b>	lot specific
<b>Purification:</b>	Affinity Chromatography on Protein G
<b>Conjugation:</b>	Unconjugated
<b>Storage:</b>	Upon receipt, store (in aliquots) at -20 to -70 °C. Avoid repeated freezing and thawing.
<b>Stability:</b>	Shelf life: One year from despatch.

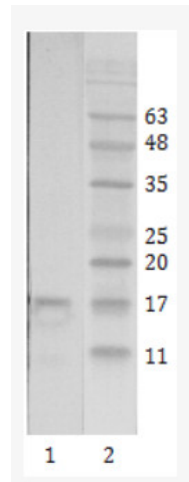


**Background:**

HIV is a highly variable virus which mutates very readily. This means there are many different strains of HIV, even within the body of a single infected person. The strains of HIV1 can be classified into three groups: the "major" group M, the "outlier" group O and the "new" group N. These three groups may represent three separate introductions of simian immunodeficiency virus into humans. Group O appears to be restricted to West-Central Africa and group N, discovered in 1998 in Cameroon, is extremely rare. More than 90% of HIV1 infections belong to HIV1 group M.

**Synonyms:**

HIV1, HIV-1, Human immunodeficiency virus type 1

**Product images:**

Western Blot testing of HIV-1 recombinant Tat protein: using HIV-1 Tat antibody, Clone 15 (Cat.-No AM26084PU-N) at 2 g/ml. Line 1: Recombinant HIV-1 Tat (B subtype). Line 2: Protein size marker.