

Product datasheet for **AM26074PU-N**

HIV-1 Nef / HXB2 (31-35) Mouse Monoclonal Antibody [Clone ID: 3F2 (01-001)]

Product data:

Product Type:	Primary Antibodies
Clone Name:	3F2 (01-001)
Applications:	ELISA, IHC, IP, WB
Recommended Dilution:	Reacts in ELISA, Western blot, Immunoprecipitation and Immunohistochemistry on Frozen Sections with HIV-1 Nef of BRU, IIIB, LAV, HAN strains. Titer using rNef protein with subtype C a.a. consensus: ELISA: 1/5000. Western blot: 1/1000.
Reactivity:	Human
Host:	Mouse
Isotype:	IgG1
Clonality:	Monoclonal
Immunogen:	Recombinant Nef protein of HIV-1 HXB2 (purified from E. coli)
Specificity:	This antibody detects HIV-1 Nef regulatory protein, mapped to amino acids 31-35 (-GAASR-, HIV-1 HXB2). Reacts with HIV-1 subtype C Nef of BRU, IIIB, LAV, HAN strains.
Formulation:	PBS, pH 7.4 State: Aff - Purified State: Liquid purified Ig fraction Preservative: 0.09% Sodium Azide
Concentration:	lot specific
Purification:	Affinity Chromatography on Protein G
Conjugation:	Unconjugated
Storage:	Upon receipt, store (in aliquots) at -20 to -70 °C. Avoid repeated freezing and thawing.
Stability:	Shelf life: One year from despatch.



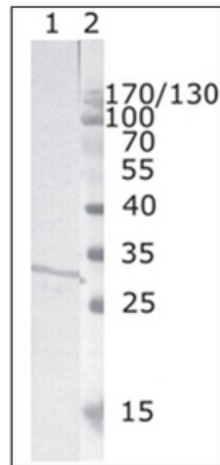
[View online »](#)

Background:

HIV is a highly variable virus which mutates very readily. This means there are many different strains of HIV, even within the body of a single infected person. The strains of HIV1 can be classified into three groups: the "major" group M, the "outlier" group O and the "new" group N. These three groups may represent three separate introductions of simian immunodeficiency virus into humans. Group O appears to be restricted to West-Central Africa and group N, discovered in 1998 in Cameroon, is extremely rare. More than 90% of HIV1 infections belong to HIV1 group M.

Synonyms:

HIV1, HIV-I, Human immunodeficiency virus type 1

Product images:

Western Blot testing of HIV-1 recombinant Nef protein using HIV-1 Nef antibody clone 3F2. Line 1: Recombinant HIV-1 Nef (B subtype). Line 2: Protein size marker.