

Product datasheet for **AM26065PU-N**

Endothelial Cells Mouse Monoclonal Antibody [Clone ID: DLP97]

Product data:

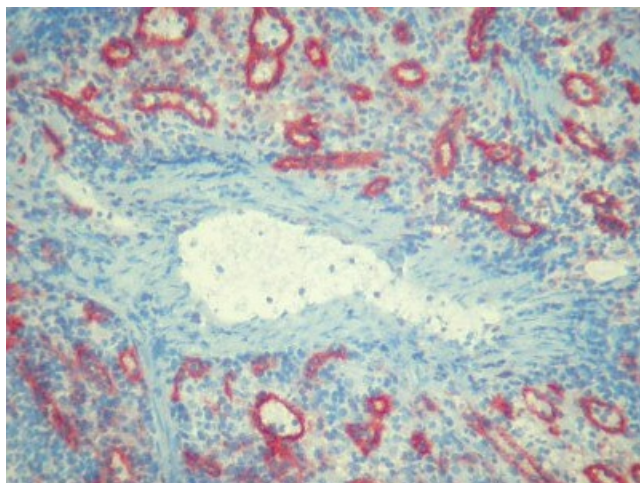
Product Type:	Primary Antibodies
Clone Name:	DLP97
Applications:	IHC
Recommended Dilution:	Immunohistochemistry on Frozen Sections: 0.2 µg/ml (1/1000). Immunohistochemistry on Paraffin Sections: 4 µg/ml (1/50). No pretreatment for antigen retrieval necessary. <i>Suggested Positive Control:</i> Rat spleen.
Reactivity:	Rat
Host:	Mouse
Isotype:	IgG1
Clonality:	Monoclonal
Immunogen:	Rat spleen cells.
Specificity:	This antibody reacts with sinus endothelial cells in spleen and liver. It also reacts with endothelial cells in organs such as lung and kidney. Antigen Distribution: The antigen is found on endothelial cells in various rat tissues.
Formulation:	Stock solution contains PBS, pH 7.2 with 5 mg/ml BSA as a stabilizer and 0.09% Sodium Azide as a preservative State: Aff - Purified State: Lyophilized Ig fraction
Reconstitution Method:	Restore by adding 0.5ml distilled water.
Concentration:	0.2 mg/ml (after reconstitution)
Purification:	Affinity Chromatography
Conjugation:	Unconjugated
Storage:	Prior to reconstitution store at 2-8°C. Following reconstitution store undiluted at 2-8°C for one month or (in aliquots) at -20°C for longer. Avoid repeated freezing and thawing.
Stability:	Shelf life: one year from despatch.



[View online »](#)

Synonyms: Endothelial Cell marker

Product images:



Immunohistochemistry on frozen sections:
Staining of rat spleen with AM26065PU-N clone
DLP97