

Product datasheet for **AM26061PU-N**

CRP Mouse Monoclonal Antibody [Clone ID: PC1]

Product data:

Product Type:	Primary Antibodies
Clone Name:	PC1
Applications:	ELISA, WB
Recommended Dilution:	ELISA: 0.5 µg/ml (1/2000). Western blot: 1 µg/ml.
Reactivity:	Porcine
Host:	Mouse
Isotype:	IgG1
Clonality:	Monoclonal
Immunogen:	Purified Porcine CRP.
Specificity:	This Monoclonal antibody <i>PC1</i> recognizes Porcine C-reactive protein (CRP).
Formulation:	Phosphate buffered saline pH 7.2 (PBS) State: Purified State: Liquid purified IgG fraction Stabilizer: The antibody is produced serum-free, no stabilizing protein has been added. Preservative: 0.09% Sodium Azide
Concentration:	1.0 mg/ml
Conjugation:	Unconjugated
Storage:	Store undiluted at 2-8°C for one month or (in aliquots) at -20°C for longer. Avoid repeated freezing and thawing.
Stability:	Shelf life: one year from despatch.
Database Link:	Entrez Gene 396842 Pig O19062



[View online »](#)

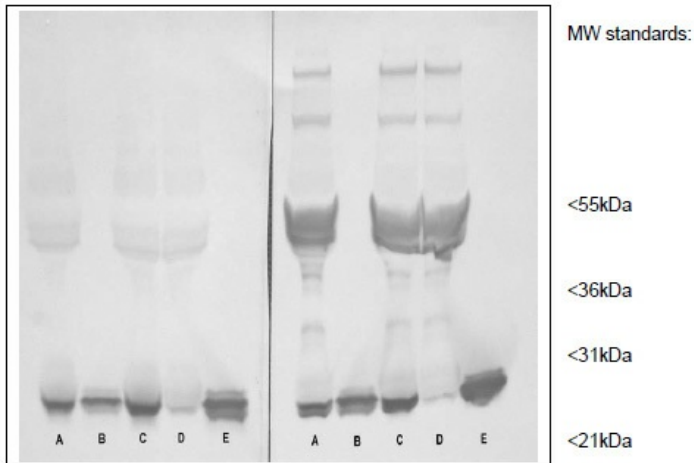
Background:

CRP belongs to a highly conserved phylogenetically ancient family called pentraxins, which have five identical non-covalently linked subunits. Native CRP in its pentameric form has a molecular weight of approximately 115kDa. As in humans, CRP is an acute-phase protein in pigs. It has been suspected to be directly involved in the pathogenesis of ischemic diseases through the activation of the complement system. CRP levels have been measured in porcine serum.

Median levels in specific pathogen-free animals were 5 µg/ml and increased 40- to 70-fold due to inflammation or infection with *Mycoplasma hyopneumoniae*.

Synonyms:

PTX1, C Reactive Protein, Pentraxin-related

Product images:

Western blot with Porcine plasma and purified Porcine CRP (poCRP). Porcine plasma was diluted 1/25 and spiked with 0.08 or 0.3ug purified Porcine CRP, respectively. Polyacrylamide gel electrophoresis was performed under reducing and denaturing conditions on a 10-20% gel (Novex), blotted onto nitrocellulose and developed with monoclonal antibody PC1 (left) or competitor's monoclonal antibody (right). Lane A: Porcine plasma spiked with 0.08ug poCRP; lane B: 0.08ug poCRP; lane C: Porcine plasma spiked with 0.3ug poCRP; lane D: Porcine plasma; lane E: 0.3ug poCRP. Monoclonal antibody PC1 barely reacts with with the 50-55kDa bands visible on the right, presumably immunoglobulin heavy chains. Gel was slightly overloaded to allow visibility of CRP band in plasma.