

Product datasheet for **AM26059PU-N**

Cr1l Mouse Monoclonal Antibody [Clone ID: 512]

Product data:

Product Type:	Primary Antibodies
Clone Name:	512
Applications:	FC, IHC
Recommended Dilution:	Immunohistochemistry on frozen sections: 0.1 µg/ml (1:4000). Does not react on routinely processed paraffin sections. Has been reported to work in FACS. Suggested positive control: rat spleen.
Reactivity:	Rat
Host:	Mouse
Isotype:	IgG1
Clonality:	Monoclonal
Immunogen:	Erythrocytes from a C3 mutated rat
Specificity:	This antibody detects Crry. The antigen is found on numerous cells in blood and various tissues.
Formulation:	Stock solution contains 0.4 mg/ml IgG, phosphate buffered saline pH 7.2 (PBS), 5mg/ml bovine serum albumin (BSA) as a stabilizer and 0.09% sodium azide as a preservative. State: Aff - Purified State: Liquiphilized Ig fraction
Reconstitution Method:	Reconstitute by adding 0.5 ml distilled water.
Purification:	Affinity chromatography
Conjugation:	Unconjugated
Storage:	Prior to reconstitution store at 2-8°C. Following reconstitution store (in aliquots) at -20°C. Avoid repeated freezing and thawing.
Stability:	Shelf life: one year from despatch.
Gene Name:	complement component (3b/4b) receptor 1-like
Database Link:	Entrez Gene 54243 Rat Q63135


[View online »](#)

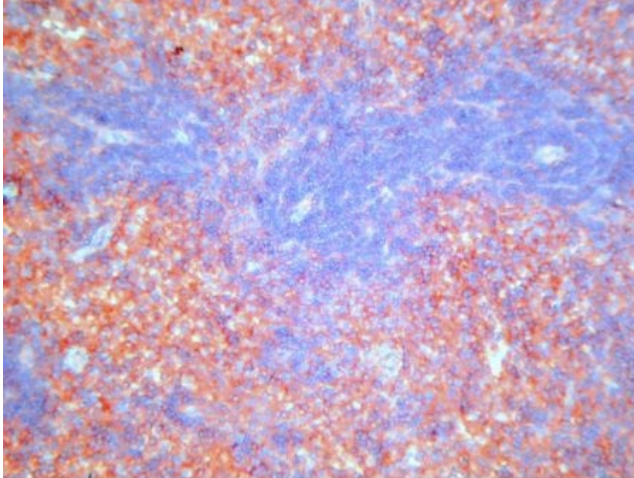
Background:

Cr1 is a cofactor for complement factor I.

Cr1 seems to act as a costimulatory factor for T-cells and is expressed on different tissues, particularly also on thymocytes and non-lymphoid cells in the thymus. Cr1 may play an important role in the early embryonic development by maintaining fetomaternal tolerance. Two forms of Cr1 exist, containing six or seven extracellular short consensus repeats (SCRs), respectively, plus a transmembrane and a cytoplasmic domain. The molecular weights of the native glycoproteins are approximately 55 and 65kDa, respectively.

Synonyms:

Antigen 512

Product images:


Immunohistochemistry on frozen sections:
Staining of rat spleen with AM26059PU-N