

Product datasheet for **AM26056PU-N**

CD20 (MS4A1) Mouse Monoclonal Antibody [Clone ID: CAT13.6E12]

Product data:

Product Type:	Primary Antibodies
Clone Name:	CAT13.6E12
Applications:	FC, IHC
Recommended Dilution:	Immunohistochemistry on Frozen Sections: 0.2 µg/ml (1/1000). Has been described to work in FACS. Recommended Positive Control: Human tonsil.
Reactivity:	Human
Host:	Mouse
Isotype:	IgG2a
Clonality:	Monoclonal
Specificity:	This antibody CAT13.6E12 recognizes the CD20 antigen. Antigen distribution on Isolated cells: The antibody stains 5-20% of human peripheral blood mononuclear cells in flow cytometry.
Formulation:	PBS, pH 7.2 State: Aff - Purified State: Lyophilized purified Ig fraction Stabilizer: 5mg/ml BSA Preservative: 0.09% Sodium Azide
Reconstitution Method:	Restore by adding 0.5 ml distilled water
Concentration:	0.2 mg/ml (after reconstitution)
Purification:	Affinity Chromatography
Conjugation:	Unconjugated
Storage:	Store lyophilized at 2-8°C for 6 months or at -20°C long term. After reconstitution store the antibody undiluted at 2-8°C for one month or (in aliquots) at -20°C long term. Avoid repeated freezing and thawing.
Stability:	Shelf life: one year from despatch.
Gene Name:	membrane spanning 4-domains A1



[View online »](#)

Database Link: [Entrez Gene 931 Human P11836](#)

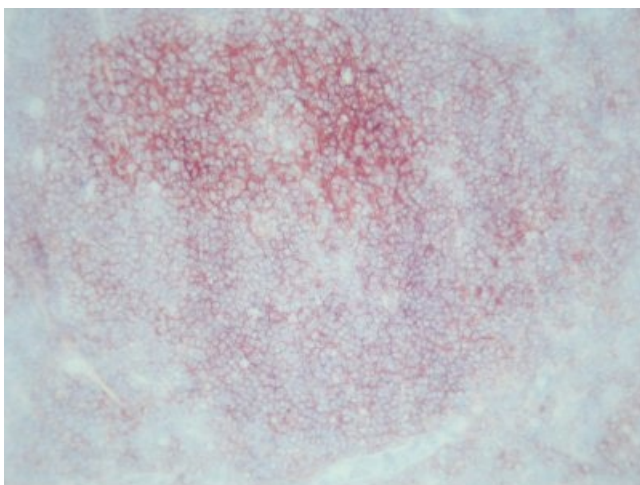
Background: CD20 belongs to the MS4A family (Membrane-spanning 4-domains subfamily A). Its expression is restricted to normal and neoplastic B cells. It is expressed by pre-B cells in the bone marrow, and expression persists during B cell maturation but is lost upon terminal differentiation into plasma cells. CD20 is not glycosylated. CD20 is not phosphorylated in resting B cells, but becomes heavily phosphorylated after mitogen stimulation. Three cell surface isoforms 33, 35 and 37kD, result from differential phosphorylation of a single core 33kD protein within the cytoplasmic domain. Multiple proteins are coimmunoprecipitated with CD20, suggesting that it may be a component of a multimeric surface receptor complex. Monoclonal antibodies against CD20 are used therapeutically, such as Rituximab (Mabthera) or Britumomab (Zevalin).

Synonyms: MS4A1, Leu-16, Bp35, B-cell marker

Protein Families: Druggable Genome, Transmembrane

Protein Pathways: Hematopoietic cell lineage

Product images:



Immunohistochemistry on frozen sections:
Staining of human tonsil with AM26056PU-N