

## Product datasheet for **AM26051PU-N**

### CD37 Mouse Monoclonal Antibody [Clone ID: HH1]

#### Product data:

Product Type:	Primary Antibodies
Clone Name:	HH1
Applications:	FC, IHC
Recommended Dilution:	<b>Immunohistochemistry on Frozen Sections:</b> 0.5 µg/ml (1/400). <i>Recommended Positive Control:</i> Human tonsil. Has been described to work in <b>FACS</b> .
Reactivity:	Human
Host:	Mouse
Isotype:	IgG1
Clonality:	Monoclonal
Specificity:	This Monoclonal HH1 antibody recognizes the CD37 antigen. <b>Antigen Distribution</b> <b>Isolated cells:</b> The antibody strongly stains approximately 2-10% of human peripheral blood mononuclear cells in flow cytometry. CD37 is present at low density on resting and activated T cells, neutrophils, monocytes and some myelomonocytic leukemia cells. <b>Tissue Sections:</b> The antibody shows a B cell restricted staining pattern.
Formulation:	PBS, pH 7.2 State: Aff - Purified State: Lyophilized purified IgG fraction Stabilizer: 5 mg/ml BSA Preservative: 0.09% Sodium Azide
Concentration:	0.2 mg/ml (after reconstitution)
Purification:	Affinity Chromatography
Conjugation:	Unconjugated
Storage:	Store lyophilized at 2-8°C for 6 months or at -20°C long term. After reconstitution store the antibody undiluted at 2-8°C for one month or (in aliquots) at -20°C long term. Avoid repeated freezing and thawing.
Stability:	Shelf life: one year from despatch.



[View online »](#)

**Gene Name:** CD37 molecule

**Database Link:** [Entrez Gene 951 Human P11049](#)

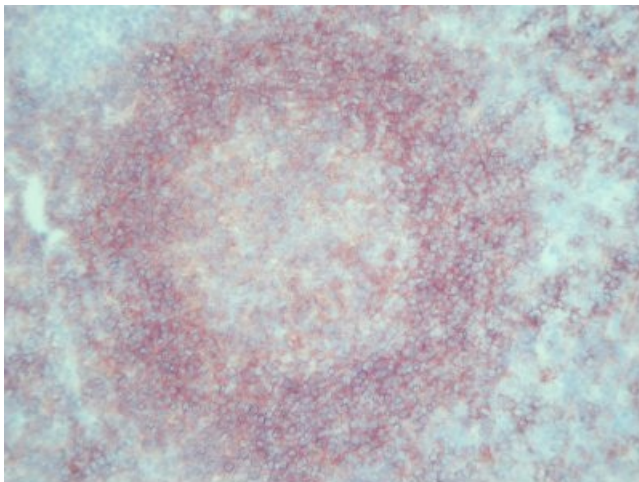
**Background:** CD37 is strongly expressed on normal and neoplastic mature B lymphocytes. In B-cell ontogeny, the antigen appears after the pre-B-cell stage, is maintained during peripheral B-cell development and is lost upon terminal differentiation into plasma cells. Due to its strong expression, CD37 is a valuable and stable marker for peripheral mature B cells and malignancies thereof. CD37 is extensively glycosylated and typically precipitates as a broad band ranging from 42 to 52kD.

**Synonyms:** TSPAN26, Tetraspanin-26

**Protein Families:** Transmembrane

**Protein Pathways:** Hematopoietic cell lineage

### Product images:



Human Tonsil Frozen Section stained with CD37 Antibody Cat.-No AM26051PU-N (Clone HH1).