

Product datasheet for **AM26050PU-N**

CD24 Mouse Monoclonal Antibody [Clone ID: 32D12]

Product data:

| | |
|------------------------|-----------------------------------------------------------------------------------------------------------------------------------------------------------------------------------------------------------------------|
| Product Type: | Primary Antibodies |
| Clone Name: | 32D12 |
| Applications: | FC, IHC |
| Recommended Dilution: | Immunohistochemistry on frozen sections: 1 µg/ml (1:200). Has been described to work in FACS. Suggested positive control: Human tonsil. |
| Reactivity: | Human |
| Host: | Mouse |
| Isotype: | IgG1 |
| Clonality: | Monoclonal |
| Specificity: | This antibody detects CD24. |
| Formulation: | Stock solution contains 0.2mg/ml IgG, phosphate buffered saline pH 7.2 (PBS), 5mg/ml bovine serum albumin (BSA), and 0.09% sodium azide as a preservative. State: Aff - Purified State: Lyophilized Ig fraction |
| Reconstitution Method: | Reconstitute by adding 0.5ml distilled water. |
| Purification: | Affinity chromatography |
| Conjugation: | Unconjugated |
| Storage: | Prior to reconstitution store at 2-8°C. Following reconstitution store (in aliquots) at -20°C. Avoid repeated freezing and thawing. |
| Stability: | Shelf life: one year from despatch. |
| Gene Name: | CD24 molecule |
| Database Link: | Entrez Gene 100133941 Human P25063 |



[View online »](#)

Background: CD24 antigen is expressed throughout Bcell development and is downregulated as bone marrow progenitors mature. CD24 expression is lost when human B-cells become plasma cells. The cellular function for human CD24 is unknown so far. Diagnostically, it can serve as a marker for staging B-cell development, and it is expressed at high levels in small cell lung carcinoma. CD24 is a member of a family that also includes Heat Stable Antigen HSA and CD52. It is a glycosylphosphatidylinositol (GPI) anchored glycoprotein.

Synonyms: X62 heat stable antigen, HSA

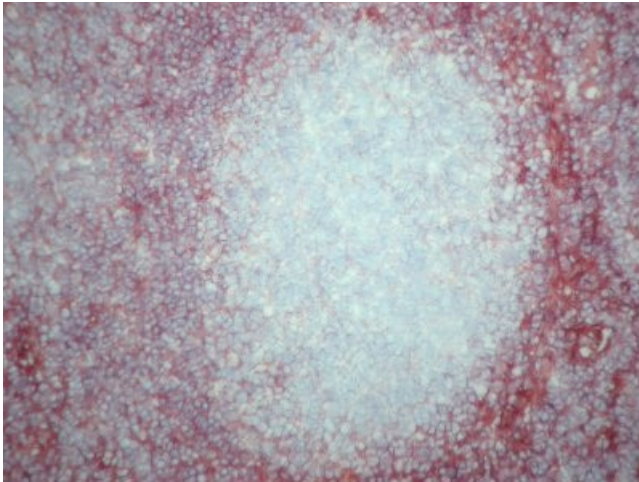
Note: Molecular weight of antigen: 35 - 45 kD.

Antigen distribution:

Isolated cells: granulocytes.

Tissue sections: B-cells (germinal centers weak); follicular dendritic cells; variety of epithelial cell types.

Product images:



Immunohistochemistry on frozen sections:
Staining of human tonsil with AM26050PU-N