

## Product datasheet for **AM26049PU-N**

### CD19 Mouse Monoclonal Antibody [Clone ID: AE1]

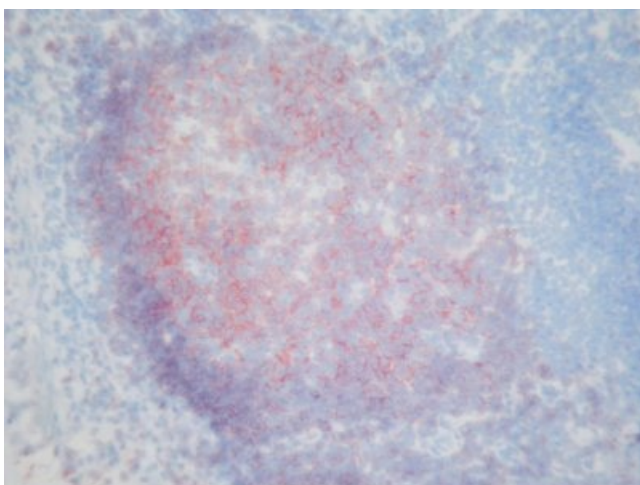
#### Product data:

Product Type:	Primary Antibodies
Clone Name:	AE1
Applications:	FC, IHC
Recommended Dilution:	<b>Immunohistochemistry on Frozen Sections:</b> 1-3 µg/ml (1/50-1/200). Does not react on routinely processed paraffin sections. Has been described to work in <b>FACS</b> . <b>Suggested Positive Control:</b> Human tonsil.
Reactivity:	Human
Host:	Mouse
Isotype:	IgG1
Clonality:	Monoclonal
Specificity:	This Monoclonal antibody <i>AE1</i> recognizes the CD19 antigen also known as Leu-12. <b>Antigen Distribution:</b> <b>Isolated cells:</b> 5-50% of human peripheral blood mononuclear cells. <b>Tissue sections:</b> The antigen is expressed on B-cells and follicular dendritic cells.
Formulation:	Stock solution contains Phosphate buffered saline pH 7.2 (PBS), 5 mg/ml BSA as a stabilizer and 0.09% Sodium Azide as a preservative State: Aff - Purified State: Lyophilized purified Ig fraction
Reconstitution Method:	Restore by adding 0.5 ml distilled water.
Concentration:	0.2 mg/ml IgG (after reconstitution)
Purification:	Affinity Chromatography
Conjugation:	Unconjugated
Storage:	Store lyophilized at 2-8°C for 6 months or at -20°C long term. After reconstitution store the antibody undiluted at 2-8°C for one month or (in aliquots) at -20°C long term. Avoid repeated freezing and thawing.
Stability:	Shelf life: one year from despatch.



[View online »](#)

<b>Gene Name:</b>	CD19 molecule
<b>Database Link:</b>	<a href="#">Entrez Gene 930 Human P15391</a>
<b>Background:</b>	CD19, also known as Leu-12, is expressed on B cells and follicular dendritic cells. CD19 is a signal transduction molecule which regulates B-cell development, activation, and differentiation. The CD19 antigen appears early in B lymphocyte differentiation at approximately the same stage as the CD22 antigen. CD19 is not expressed on granulocytes, monocytes or T cells as defined by CD3 expression.
<b>Synonyms:</b>	Leu-12, B-cell marker
<b>Protein Families:</b>	Druggable Genome, Transmembrane
<b>Protein Pathways:</b>	B cell receptor signaling pathway, Hematopoietic cell lineage, Primary immunodeficiency

**Product images:**

Immunohistochemistry on frozen sections:  
Staining of human tonsil with AM26049PU-N