

Product datasheet for **AM26046FC-N**

BCL2 (41-54) Mouse Monoclonal Antibody [Clone ID: Bcl2/100]

Product data:

Product Type:	Primary Antibodies
Clone Name:	Bcl2/100
Applications:	FC
Recommended Dilution:	Flow Cytometry analysis of human blood cells using 4 µl reagent / 100 µl of whole blood or 10e6 cells in a suspension. The content of a vial (0.4 ml) is sufficient for 100 tests.
Reactivity:	Human
Host:	Mouse
Isotype:	IgG1
Clonality:	Monoclonal
Immunogen:	Synthetic peptide corresponding to the amino acids 41-54 of human Bcl2
Specificity:	This antibody recognizes Bcl2, a 26 kDa protooncogen with anti-apoptotic effect, expressed in outer mitochondrial membrane, endoplasmic reticulum and nuclear envelope.
Formulation:	Phosphate buffered saline (PBS) containing 15 mM sodium azide and 0.2% (w/v) high-grade protease free Bovine Serum Albumin (BSA) as a stabilizing agent. Label: FITC State: Liquid purified Ig fraction Label: Conjugated with Fluorescein isothiocyanate under optimum conditions. The reagent is free of unconjugated and adjusted for direct use
Conjugation:	FITC
Storage:	Store the antibody at 2 - 8 °C. DO NOT FREEZE! This product is photosensitive and should be protected from light.
Stability:	Shelf life: one year from despatch.
Gene Name:	B-cell CLL/lymphoma 2
Database Link:	Entrez Gene 596 Human P10415



[View online »](#)

Background:

Bcl2 (B cell CLL lymphoma 2) is a proto-oncogen, which can contribute to tumorigenesis by counteracting apoptosis in various cell types. The anti-apoptotic effect of Bcl2 is performed by its interactions with suppressors and agonists of cell death and under physiological conditions it is regulated by proteolytic processing and phosphorylation. Bcl2 expression can be detected mainly in lymphoid tissues and in the basal cells of epithelial tissues. It is also a marker that can help in classification of lymphoproliferative diseases and in prognostics of some epithelial neoplasms.

Synonyms:

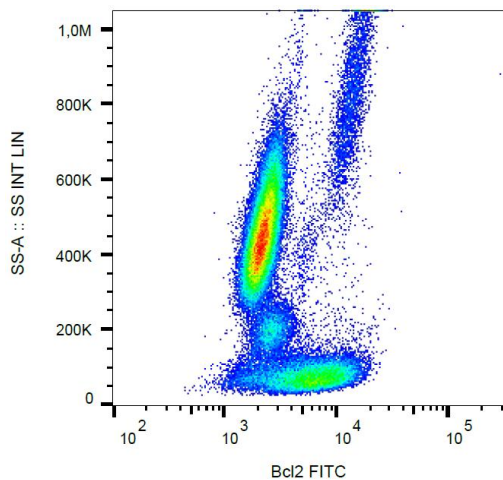
BCL2, Bcl-2 alpha

Protein Families:

Druggable Genome, ES Cell Differentiation/IPS, Stem cell - Pluripotency, Transmembrane

Protein Pathways:

Amyotrophic lateral sclerosis (ALS), Apoptosis, Colorectal cancer, Focal adhesion, Neurotrophin signaling pathway, Pathways in cancer, Prostate cancer, Small cell lung cancer

Product images:

Intracellular staining of human peripheral blood with anti-Bcl2 (Bcl-2/100) FITC.