

Product datasheet for **AM26044RP-N**

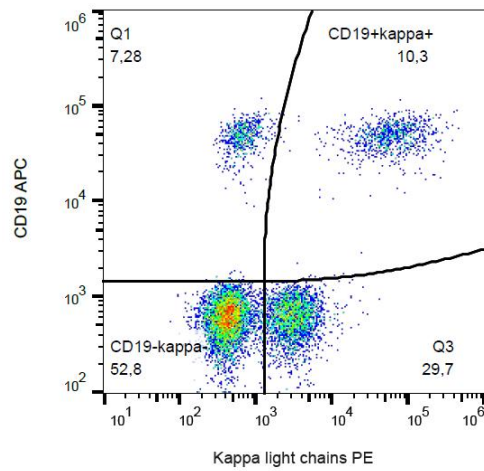
Human Kappa Light Chain Mouse Monoclonal Antibody [Clone ID: TB28-2]

Product data:

Product Type:	Primary Antibodies
Clone Name:	TB28-2
Applications:	FC
Recommended Dilution:	Flow Cytometry analysis of human blood cells using 10 µl reagent / 100 µl of whole blood or 10 ⁶ cells in a suspension.
Reactivity:	Human
Host:	Mouse
Isotype:	IgG1
Clonality:	Monoclonal
Immunogen:	Human IgG-kappa myeloma protein
Specificity:	This antibody recognizes human Ig kappa light chains of both secreted and cell surface immunoglobulin. It detects also free kappa light chains.
Formulation:	Phosphate buffered saline (PBS) Label: PE State: Liquid Ig fraction Stabilizer: 0.2% (w/v) high-grade protease free Bovine Serum Albumin (BSA) Preservative: 15 mM sodium azide Label: Conjugated with R-Phycoerythrin (PE) under optimum conditions. The conjugate is purified by size-exclusion chromatography and adjusted for direct use.
Conjugation:	PE
Storage:	Store the antibody at 2 - 8 °C. DO NOT FREEZE! This product is photosensitive and should be protected from light.
Stability:	Shelf life: one year from despatch.
Background:	Immunoglobulin classes share the same basic four polypeptide chain structure of two heavy chains (five heavy chains types) and two light chains (kappa , lambda; both having a molecular weight of 22.5kDa). Kappa and lambda consist of a variable region and a constant region and can easily be differentiated by the antigenic properties of the constant region. The ratio of kappa to lambda is 70:30.



[View online »](#)

Product images:

Surface staining of kappa light chains in human peripheral blood cells with anti-kappa light chains (TB28-2) PE.