

Product datasheet for **AM26039PU-N**

UBN1 (1-190) Mouse Monoclonal Antibody [Clone ID: UBN1-02]

Product data:

Product Type:	Primary Antibodies
Clone Name:	UBN1-02
Applications:	IP, WB
Recommended Dilution:	Immunoprecipitation. Western blot: 1-5 µg/ml; Positive control: HeLa cell line.
Reactivity:	Human
Host:	Mouse
Isotype:	IgG2a, kappa
Clonality:	Monoclonal
Immunogen:	Recombinant protein corresponding to amino acids 1-190 of ubinuclein 1
Specificity:	This antibody recognizes N-terminal part of ubinuclein 1 (UBN1), a widely expressed nuclear and adhesion complex protein. Western blotting analysis reveals UBN1 as a 165 kDa band.
Formulation:	Phosphate buffered saline (PBS) with 15 mM sodium azide, approx. pH 7.4 State: Aff - Purified State: Liquid Ig fraction
Concentration:	lot specific
Purification:	Protein-A affinity chromatography (> 95% pure by SDS-PAGE)
Conjugation:	Unconjugated
Storage:	Store at 2 - 8 °C for up to one month or (in aliquots) at -20 °C for longer. Avoid repeated freezing and thawing.
Stability:	Shelf life: one year from despatch.
Gene Name:	ubinuclein 1
Database Link:	Entrez Gene 29855 Human Q9NPG3



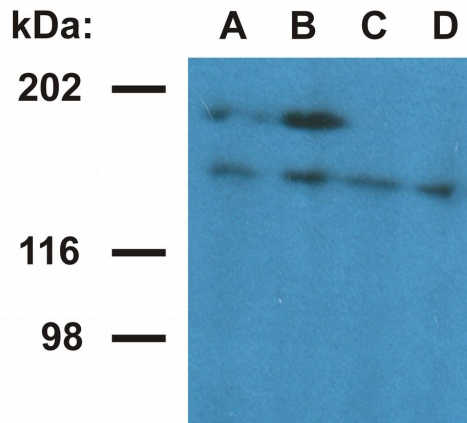
[View online »](#)

Background:

Ubinuclein 1 (UBN1) is a ubiquitously expressed evolutionarily conserved protein which binds to proliferation-promoting genes that are repressed by formation of senescence-associated heterochromatin foci (SAHF). Ubinuclein 1 associates with various transcription factors and with histone methyltransferase activity, is indispensable for SAHF formation and appears to be a regulator of senescence. Although in most cells ubinuclein is localized to the nucleus, in cells forming tight junctions it is recruited to the cell adhesion complexes, dependently on the cell density.

Synonyms:

VT; VT4

Product images:

Western blotting analysis of ubinuclein in nuclear fraction of HeLa cells. The monoclonal antibody UBN1-01 (lane A, B) detects ubinuclein 1 (165 kDa) and an 180 kDa protein - presumable ubinuclein 2. The antibody UBN1-02 (lane C, D) detects ubinuclein 1. Antibody dilution: A, C - 1ug/ml; B, D - 5ug/ml.