

Product datasheet for **AM26038RP-N**

CD34 Mouse Monoclonal Antibody [Clone ID: QBEnd-10]

Product data:

Product Type:	Primary Antibodies
Clone Name:	QBEnd-10
Applications:	FC
Recommended Dilution:	Flow Cytometry analysis of human blood cells using 20 µl reagent / 100 µl of whole blood or 10 ⁶ cells in a suspension. The content of a vial (2 ml) is sufficient for 100 tests.
Reactivity:	Human, Primate
Host:	Mouse
Isotype:	IgG1
Clonality:	Monoclonal
Immunogen:	Human endothelial vesicles
Specificity:	This antibody reacts with Class II epitope on CD34 (Mucosialin), a 110-115 kDa monomeric transmembrane phosphoglycoprotein expressed on hematopoietic progenitors cells and on the most pluripotential stem cells; it is gradually lost on progenitor cells. This antibody has been also used as an endothelial marker.
Formulation:	Phosphate buffered saline (PBS) solution containing 15mM sodium azide Label: PE State: Liquid purified Ig fraction Label: Conjugated with R-Phycoerythrin under optimum conditions. The conjugate is purified by size-exclusion chromatography and adjusted for direct use.
Conjugation:	PE
Storage:	Store the antibody at 2 - 8 °C. DO NOT FREEZE! This product is photosensitive and should be protected from light.
Stability:	Shelf life: one year from despatch.
Gene Name:	CD34 molecule
Database Link:	Entrez Gene 947 Human P28906



[View online »](#)

Background:

CD34 is a highly glycosylated monomeric 111-115 kDa surface protein, which is present on many stem cell populations. It is a well established stem cell marker, though its expression on human hematopoietic stem cells is reversible. CD34 probably serves as a surface receptor that undergoes receptor-mediated endocytosis and regulates adhesion, differentiation and proliferation of hematopoietic stem cells and other progenitors. CD34 expression is likely to represent a specific state of hematopoietic development that may have altered adhering properties with expanding and differentiating capabilities in both in vitro and in vivo conditions.

Synonyms:

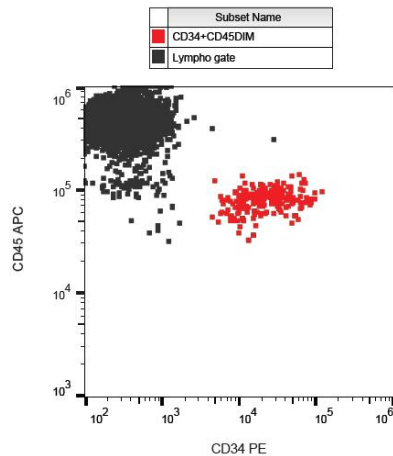
Hematopoietic progenitor cell marker

Protein Families:

Adult stem cells, Cancer stem cells, Druggable Genome, Embryonic stem cells, ES Cell Differentiation/IPS, Transmembrane

Protein Pathways:

Cell adhesion molecules (CAMs), Hematopoietic cell lineage

Product images:

Cell surface staining of CD34 in human peripheral blood with anti-CD34 (QBEnd-10) PE.