

Product datasheet for **AM26034PU-N**

HSP90AA1 Mouse Monoclonal Antibody [Clone ID: MBH90AB]

Product data:

Product Type:	Primary Antibodies
Clone Name:	MBH90AB
Applications:	IHC, WB
Recommended Dilution:	Western blot: 1 µg/ml. Does not work reliable in Immunoprecipitation.
Reactivity:	Bovine, Human, Mouse
Host:	Mouse
Isotype:	IgG1
Clonality:	Monoclonal
Immunogen:	Peptide within N-terminal part of human Hsp90
Specificity:	This antibody recognizes the epitope EEEVE within N-terminal part of ubiquitously expressed Hsp90 alpha and Hsp90 beta proteins with calculated Mw of 84.7 kDa and 83.3 kDa, respectively, however, migrating as 90 kDa bands under reducing SDS-PAGE conditions.
Formulation:	Phosphate buffered saline (PBS) containing 15 mM sodium azide and 0.2% (w/v) high-grade protease free Bovine Serum Albumin (BSA) as a stabilizing agent State: Aff - Purified State: Liquid Ig fraction
Concentration:	lot specific
Purification:	Protein-A affinity chromatography (> 95% pure by SDS-PAGE)
Conjugation:	Unconjugated
Storage:	Store at 2 - 8 °C for up to one month or (in aliquots) at -20 °C for longer. Avoid repeated freezing and thawing.
Stability:	Shelf life: one year from despatch.
Gene Name:	heat shock protein 90kDa alpha family class A member 1
Database Link:	Entrez Gene 15519 Mouse Entrez Gene 3320 Human P07900



[View online »](#)

Background:

Hsp90 (heat shock protein 90) is one of the most abundant chaperones in the cytosol of eukaryotic cells. It interacts with various proteins, including protein kinases and transcription factors, and either facilitates their stabilization and activation or directs them for proteasomal degradation. Hsp90 thus affects multiple signaling pathways and biological processes and modulation of this single target offers the prospect of simultaneous interence to various key points of oncogenic transformation. Hsp90 operates as a dimer in a conformational cycle driven by ATP binding and hydrolysis. There are two isoforms, alpha and beta, of vertebrate Hsp90. Whereas Hsp90 beta is expressed constitutively to a high level, Hsp90 alpha is stress-inducible and is overexpressed in many cancerous cells.

Synonyms:

HSP90AB1, HSP90B, HSPC2, HSPCB, HSP84, HSP-90, HSP-84, Heat shock protein HSP 90-beta, HSP84, HSP-84, HSP90AA1, HSP90A, HSPC1, HSPCA, HSP86, HSP-86, Renal carcinoma antigen NY-REN-38, Heat shock protein HSP 90-alpha, HSP86, HSP-86

Protein Families:

Druggable Genome

Protein Pathways:

Antigen processing and presentation, NOD-like receptor signaling pathway, Pathways in cancer, Progesterone-mediated oocyte maturation, Prostate cancer

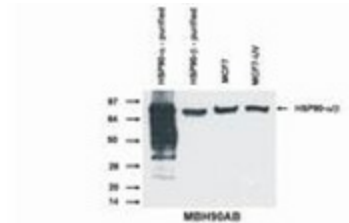
Product images:


Fig. 1.

Western blotting analysis of Hsp90 alpha and beta protein by antibody MBH90AB to both Hsp90 alpha and beta isoform.