

Product datasheet for **AM26033AC-N**

KIR2DL4 Mouse Monoclonal Antibody [Clone ID: mAb#33]

Product data:

Product Type:	Primary Antibodies
Clone Name:	mAb#33
Applications:	FC
Recommended Dilution:	Flow Cytometry analysis of human blood cells using 10 µl reagent / 100 µl of whole blood or 10 ⁶ cells in a suspension. The content of a vial (1 ml) is sufficient for 100 tests.
Reactivity:	Human
Host:	Mouse
Isotype:	IgG1
Clonality:	Monoclonal
Immunogen:	NK3.3 cells and KIR2DL4-Ig fusion protein
Specificity:	This antibody (also known as mAb 33 or 33) recognizes extracellular portion of CD158d / KIR2DL4, a 45 kDa NK cell marker. Cell surface expression and function of CD158d / KIR2DL4 depends on genotype of particular individuals.
Formulation:	Phosphate buffered saline (PBS) Label: APC State: Liquid purified Ig fraction Stabilizer: 0.2% (w/v) high-grade protease free Bovine Serum Albumin (BSA) Preservative: 15 mM sodium azide
Conjugation:	APC
Storage:	Store the antibody undiluted at 2-8°C. DO NOT FREEZE! This product is photosensitive and should be protected from light.
Stability:	Shelf life: one year from despatch.
Gene Name:	killer cell immunoglobulin like receptor, two Ig domains and long cytoplasmic tail 4
Database Link:	Entrez Gene 3805 Human Q99706



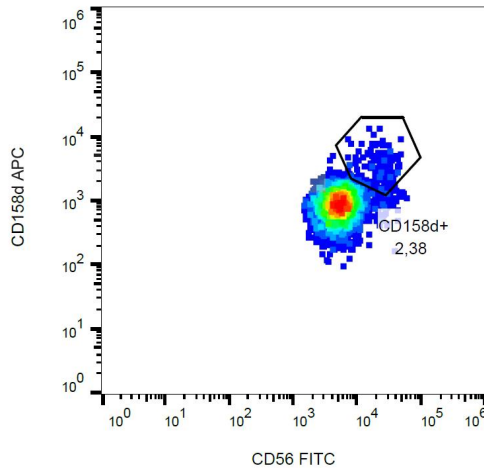
[View online »](#)

Background:

CD158d / KIR2DL4 is a KIR family member that shares structural features with both activating and inhibitory receptors and may mediate different functions under different circumstances. It contains cytoplasmic ITIM, suggesting inhibitory function, but also transmembrane domain similar to those of activating KIRs. It has been reported that CD158d serves as an inhibitory receptor for peripheral and uterine NK cells, but its ligation with soluble mAbs (unlike immobilized mAbs) results in activation of IFN- γ secretion. CD158d also binds both membrane form and soluble form of its ligand HLA-G.

Synonyms:

KIR103AS, G9P

Product images:

Surface staining of CD158d in human peripheral blood using anti-CD158d (mAb#33) APC.